



**astrinas**



**trust   competence**  
**experience   intelligence**



**astrinas**

# Content

---

## General information

Introduction.....	4
Quality & Inspection.....	5

## Product information

Aluminium profiles.....	6 – 7
Aluminium accessories.....	8 – 9
Stainless steel tubes.....	10 – 11
Stainless steel bars and angles.....	12 – 13
Stainless steel coils.....	14 – 15
Stainless steel sheets.....	16 – 17
Stainless steel accessories.....	18
Stainless steel individual products.....	19
Brass components.....	20 – 21

## Additional information

Packaging & Shipment.....	22
Services.....	23
Manufacturing plants.....	24
Common stainless steels.....	25
Notices.....	26 – 27

# Introduction

---



**astrinas - Asian Trade and Investment Ltd.** is a top modern organisation with own manufacturing plants for different industrial products. We are as well expert for opening new markets for any purchasing and sales opportunities between Asia and Europe.

astrinas was founded in 2011 in Switzerland as trade and investment developing association especially for trading business and investments between Europe and Asia. Just two year later, in 2013, we began to invest in own manufacturing plants for metal products, especially in aluminium, stainless steel and brass.

Since 2015 astrinas is a well-known manufacturer of high quality products according the European quality standards of each manufactured product and their application. Due to our good reputation in the market we are an important and sustainable supplier for our customers.



We follow to our entrepreneurial visions as one of the most important and responsible partner for any industrial product and commodity between Asian and European partners, customers and suppliers and we build the bridge between the different mentalities and business cultures.



Our mission for our partners, customers, suppliers and service providers is success oriented and well defined.



Our culture is the only way to have success on a long-term base with high reliability and motivation, coupled with continuous improvements and on the human resources side with mutual respect encompassing tolerance, trust, honesty and integrity. We campaign for a sustained development with a commitment to our environment.



We bring our value to all partners, customers, suppliers and service providers. Fairness, pursuit of excellence, community involvement and innovation are the key for growing together in a partner oriented relationship.



With our principles to be trustful, keep an open mind, meet obligations and be respectful anytime we reflect our company philosophy.

Our business policy follows exactly to our slogan:  
**TRUST - COMPETENCE - EXPERIENCE - INTELLIGENCE!**

# Quality & Inspection



Inspection and testing are the operational parts of quality control, which is the most important factor to the survival of any manufacturing company as ours. Our manufactured products, individual components and multicomponent systems are adequate for their intended purpose. Quality control directly supports the other factors of cost, productivity, on-time delivery, and market share. Therefore, all quality standards to produce the product and perform its application must be specified in a manner such that customers expectations are met. As global manufacturing company we become more customer-oriented and focused in terms of offering higher quality products and services.

## Quality

Due to our company philosophy we are only following on medium- and long-term based business opportunities. This allows us to reach the best possible quality in all our raw materials and manufactured industrial products. Quality tests of our raw materials and of all our industrial products during the production process will be guaranteed anytime.

## Inspection

For any raw materials and industrial products according our product range we offer an independent inspection anytime during the manufacturing process, before packaging and during the loading of the goods into the containers or trucks. All inspections can be made through our own inspection team or according the clients instructions.

## ISO Certification

As international company we passed the ISO certification for ISO 9001:2015 & ISO 14001:2015 according the newest international standards.





# Aluminium profiles

---



## Aluminium manufacturing

We can offer a wide range of aluminium extrusion products according your drawings. Our main products are aluminium extrusion profiles for any industry in the most important aluminium alloys. We also can offer special aluminium alloy products according your requirements.

With our two modern aluminium manufacturing sites we are strategically well equipped to guarantee all the goods in high quality, best lead times and workable prices.

Due to our own casting for the aluminium billets and our own mould construction we have a big advantage to fulfil highest performance in the requirements of our customers.

## Important facts about our factories

Capacity: 38'000 metric tons per year

Number of extrusion machines: 18 up to 1'800 tons

Number of casting furnaces: 8

Number of colouring lines: 4

Number of oxidation lines: 3

Number of electrophoresis lines: 3

Number of mould workshops: 2

Standards: DIN EN 573-3, DIN EN 755-1/-2/-5

Main aluminium alloys: 6060, 6061, 6063, 6082 (other aluminium alloys on request)

The main markets are window and door industry, handrail construction, vehicle manufacturing and any industrial purpose sold through international importers, wholesalers and regional traders to their markets.

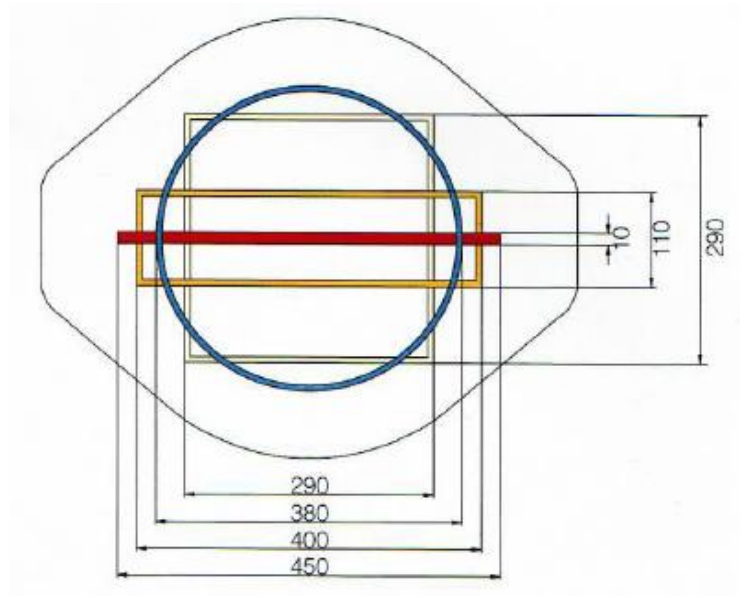
Furthermore we offer various mechanical and surface treatments for all our own manufactured products.

# Aluminium profiles

## Maximum production sizes

Square profiles: 290 x 290 mm  
Rectangular profiles: 400 x 110 mm  
Round profiles: 380 mm  
Flat profiles: 450 x 10 mm

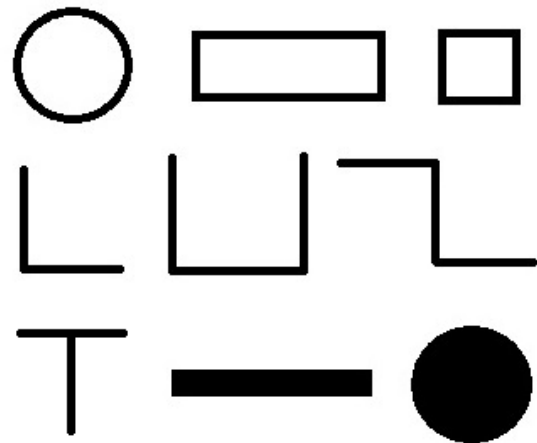
Special sizes:  
On request according drawing



## Main standard profiles

Round hollow profiles  
Rectangular hollow profiles  
Square hollow profiles  
Angle profiles  
U-profiles  
Z-profiles  
Flat bar profiles  
Round bars

Special profiles:  
On request according drawing

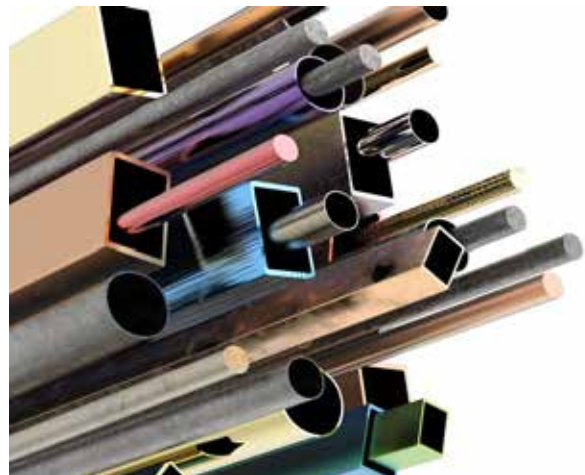


## Surface treatment

Bright shining anodizing  
Colour anodizing  
Colour painting

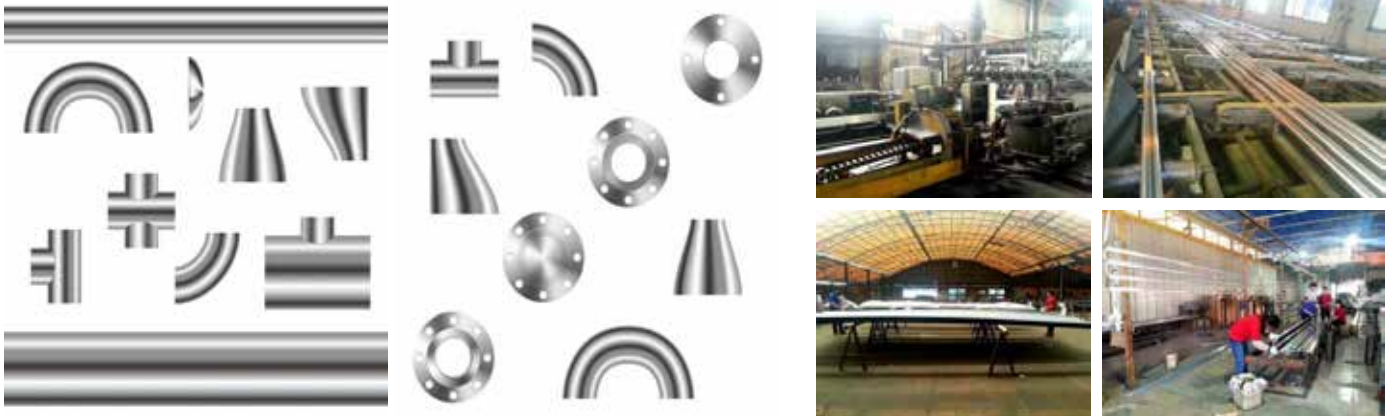
## Mechanical treatment

Bending  
Punching  
Cutting  
Welding  
Chamfering  
and much more



# Aluminium accessories

---



## Aluminium accessory manufacturing

We can offer a wide range of aluminium accessory products according to your drawings. Our main products are aluminium accessories for any industry in the most important aluminium alloys. We also can offer special aluminium alloy products according to your requirements.

With our two modern aluminium manufacturing sites we are strategically well equipped to guarantee all the goods in high quality, best lead times and workable prices.

The important facts about our factories you can see on the page for aluminium profiles.

## Important production facts for accessories

Bending of aluminium profiles

Cutting of aluminium profiles and accessories

Punching of aluminium profiles and accessories

Threading of aluminium profiles and accessories

Stamping of aluminium profiles and accessories

Casted aluminium accessories

Anodized aluminium accessories

Standards: DIN EN 573-3, DIN EN 755-1/-2/-5 (aluminium profiles)

Main aluminium alloys: 6060, 6061, 6063, 6082 (other aluminium alloys on request)

The main markets are electrical, window and door industry, handrail construction, vehicle manufacturing, automotive industry and any industrial purpose sold through international importers, wholesalers and regional traders to their markets.

Furthermore we offer various mechanical and surface treatments for all our own manufactured products.



# Aluminium accessories

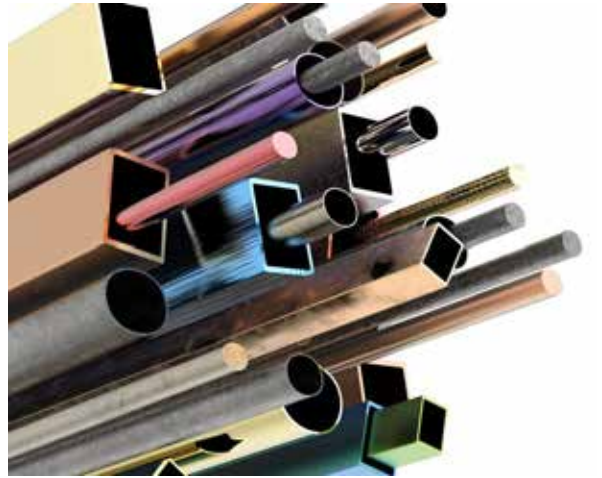
---

## Surface treatment

Bright shining anodizing  
Colour anodizing  
Colour painting

## Mechanical treatment

Bending  
Punching  
Cutting  
Welding  
Chamfering  
and much more



## Main product range

Elbows  
Fittings  
Plugs  
Connectors  
Flanges  
Couplers  
Screws  
Customized products

Standardised fittings in push-in and different threaded versions are available.

# Stainless steel tubes

---



## Stainless steel tube manufacturing

In our factory we have invested in an own production for stainless steel tubes. We can manufacture every stainless steel product according the international standards and as well customized according your drawing. Our main products are stainless steel tubes in the most common stainless steel qualities for every industrial application. Furthermore we can produce as well in different other stainless steel qualities according your requirements.

With our modern stainless steel manufacturing site we are strategically well equipped to guarantee all the goods in high quality, best lead times and workable prices.

## Important facts about our factory

Capacity: 26'000 metric tons per year

Number of welding lines: 24

Number of polishing lines: 10

Number of annealing lines: 6

Standards: DIN EN 10296-2, DIN EN 10305-5, DIN EN 10217-7, DIN EN 10357, DIN 11850, EN ISO 1127, ASTM A554, ASTM A249, ASTM A269, ASTM A270, ASTM A312, SMS 3008, SME BPE

Main materials: 1.4301/304, 1.4307/304L, 1.4301/304//1.4307/304L, 1.4401/316, 1.4404/316L, (other stainless steel qualities on request)

We are dedicated to offer perfect quality and intimate service to satisfy all the customers requirements, so we always study and improve ourselves in every aspect. For each product type we are able to offer test certificates according the international standards and as well according the customers instructions.

The main markets are decoration purposes, construction, machinery, medical-technical devices, sports equipment, automotive, furniture, chemical and food industry, electrical, sanitary, vehicle manufacturing and any industrial purpose sold through international importers, wholesalers and regional traders to their markets.

Furthermore we offer various mechanical and surface treatment for all our own manufactured products.

# Stainless steel tubes

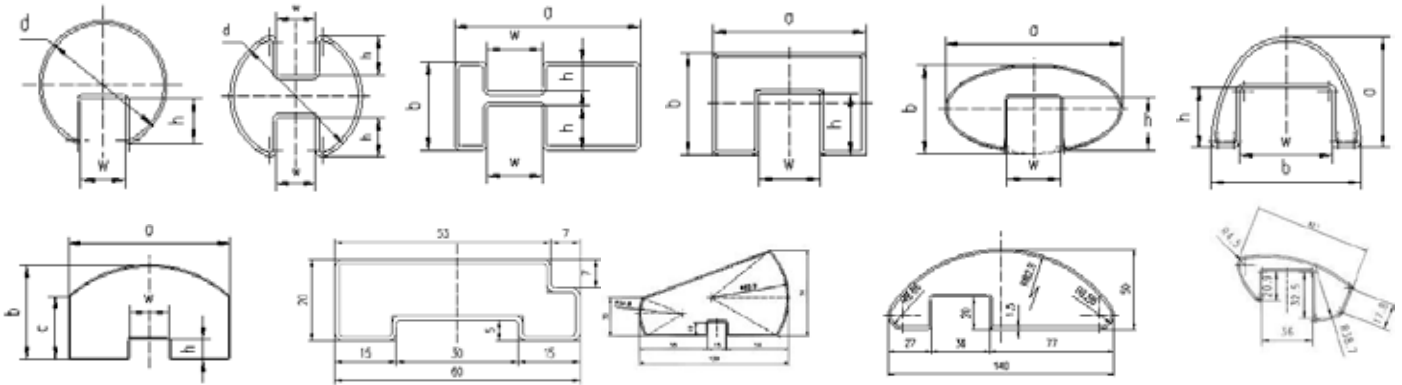
## Product range

### Ornamental tubes

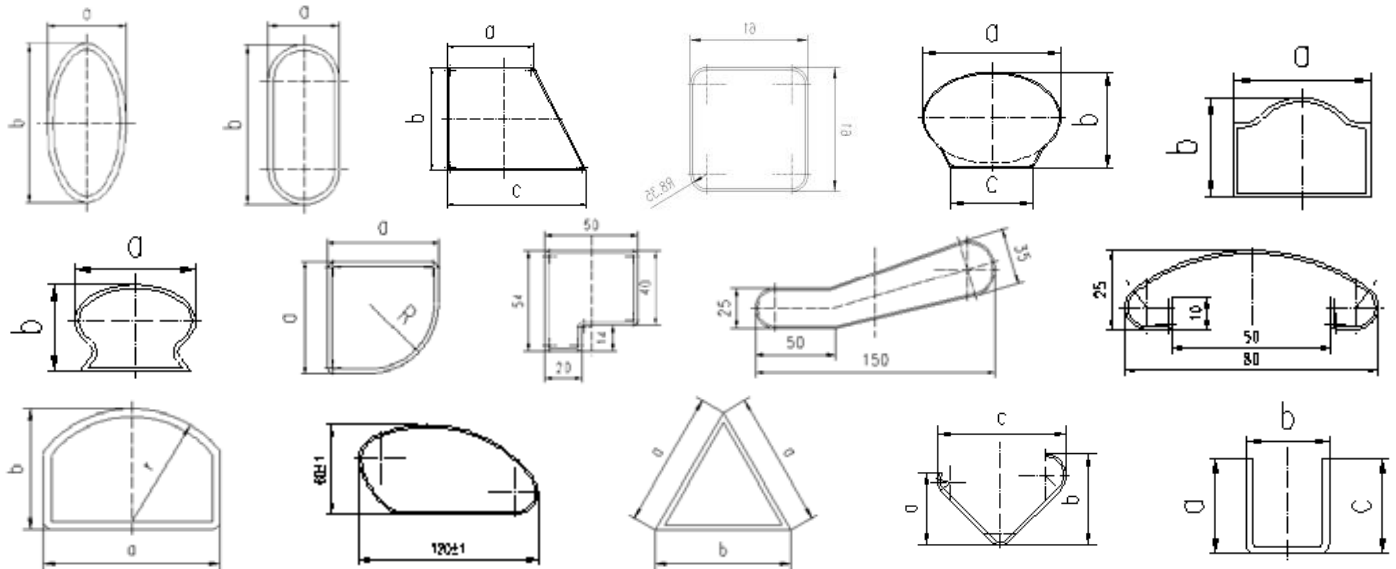
Round tubes 8.0 x 0.25 – 323.85 x 6.0 mm

Square and rectangular tubes 10.0 x 10.0 x 0.4 – 200.0 x 200.0 x 6.0 mm

### Slot tubes



### Special shape tubes



### Heat-exchanger tubes

Heat-exchanger tubes and condenser round tubes 15.88 x 0.5 – 104.0 x 3.5 mm

### Food tubes

Food round tubes 3A 15.88 x 1.65 – 101.6 x 2.11 mm

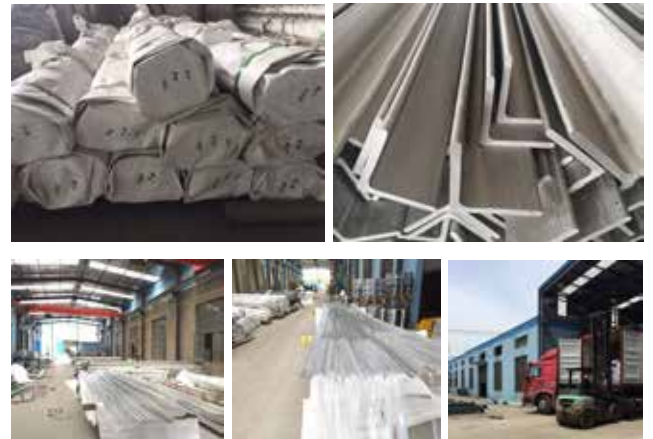
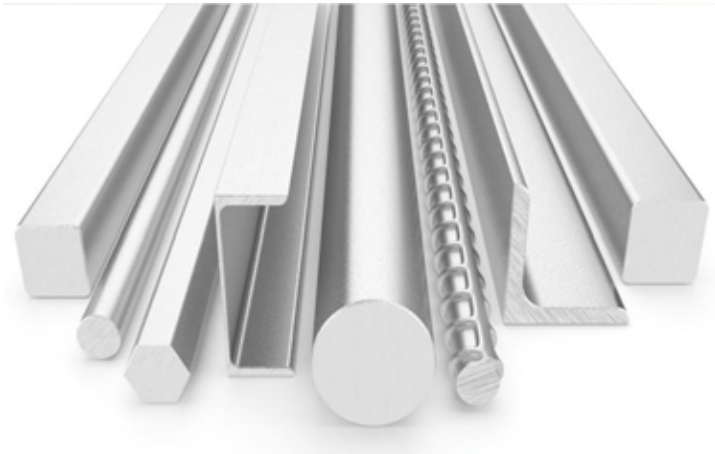
### Pipes

Pipes and large diameter round tubes 10.3 x 1.73 – 1016.0 x 9.53 mm

All tubes are manufactured according the European tolerance standards according ISO EN 1127.

# Stainless steel bars and angles

---



## Stainless steel bars and angles manufacturing

In our factory we have newly invested in an own production for stainless steel bars and angles. We can produce every standard normed stainless steel product according the international standards. Our main products are stainless steel bars and angles in the most common stainless steel qualities for every industrial application. Furthermore we can produce as well in other stainless steel qualities according your requirements.

With our modern stainless steel manufacturing site we are strategically well equipped to guarantee all the goods in high quality, workable lead times and prices.

Due to our own casting for the billets and our own mould construction we have a big advantage to fulfil highest performance in the requirements of our customers.

## Important facts about our factory

Capacity: 15'000 metric tons per year

Number of casting furnaces: 4

Number of polishing lines: 2

Number of cold drawing lines: 2

Number of mould workshops: 1

Standards: DIN EN 10088-2/-3, DIN EN 10278 h9/h11, DIN EN 10056-1/-2, DIN EN 10048, DIN EN 10056-2, DIN EN 10058, ASTM A276, ASTM A484, ASTM A479, ASTM A564, ASTM A582

Main materials: 1.4301/304, 1.4307/304L, 1.4301/304//1.4307/304L, 1.4305/303, 1.4401/316, 1.4404/316L, 1.4571/316Ti, 2205 Duplex (other stainless steel qualities on request)

The main markets are construction, aerospace and defence, chemical processing industries, oil and gas, electrical energy, medical, automotive, food equipment and appliance, mining, transportation and electronics and any industrial purpose sold through international importers, wholesalers and regional traders to their markets.

Furthermore we offer various mechanical and surface treatment such as cutting, polishing, annealing and pickling for all our own manufactured products.

# Stainless steel bars and angles

---

## Main manufactured products



Round bars cold drawn 3.0 – 100.0 mm, up to 105.0 – 205.0 mm on request, tolerance h9, lengths 3000 – 6100 mm, optionally with high quality surface polishing in K180, K240, K320



Flat bars hot rolled 10.0 x 3.0 – 100 x 10.0 mm, tolerance EN 10058, length 4000 – 6100 mm



Flat bars cold drawn 10.0 x 3.0 – 100 x 10.0 mm, tolerance EN 10278, length 4000 – 6100 mm (surface polished no tolerance class)



Square bars hot rolled 5.0 x 5.0 – 40.0 x 40.0 mm, tolerance h11, length 3000 – 6100 mm (on request production up to 100.0 x 100.0 mm)



Square bars cold drawn 5.0 x 5.0 – 40.0 x 40.0 mm, tolerance h11, length 3000 – 6100 mm (surface polished no tolerance class, production up to 100.0 x 100.0 mm on request)



Hexagonal bars cold drawn AF5.0 – AF46.0 mm, tolerance h9 or h10 or h11 on request, length 3000 – 6100 mm



Angle bars equal hot rolled 20.0 x 20.0 x 3.0 – 100.0 x 100.0 x 12.0 mm, tolerance EN 10056-2, length 6000 – 6100 mm



Flat bars (slit from strip) hot rolled 10.0 x 3.0 – 100 x 10.0 mm, tolerance EN 10048, length 4000 – 6100 mm, bigger material thicknesses on request

## Special manufactured products



Angle bars unequal hot rolled on request individual length until 6000 mm



U-channels hot rolled on request individual length until 6000 mm



T-profiles hot rolled on request individual length until 6000 mm



H-profiles hot rolled on request individual length until 6000 mm

All special manufactured products can be supplied with polished surface.

## Additional manufactured products

Stainless steel wires hot rolled (5.5 – 20.0 mm), cold rolled (1.0 – 12.0 mm) and redrawing (min. 0.1 mm)  
Stainless steel high quality rebars for construction



# Stainless steel coils

---



## Stainless steel coil manufacturing

Due to the high demand in the market from our customers for our high quality products we did further investments in the production of stainless steel coils.

We produce a wide variety of stainless steel coils in different standard and customized dimensions. They are a broad range of applications in any industry. The products are produced under environmental supervision and all our products are manufactured with first quality raw material. All our products have an excellent corrosion and heat resistance. The average stock effective is more than 1'000 metric tons of stainless steel materials, becoming the largest on-hand stainless steel products platform with complete range for all our customers.

## Important facts about our factory

Capacity: 300'000 metric tons per year

Number of equipment: 23

Number of mould workshops: 2

Standards: DIN EN 10088-2/-3, DIN EN ISO 9445-2, DIN EN ISO 9444-2, DIN EN 10028-7, DIN EN 10029, DIN EN 10051, DIN EN 10048

Surface treatment: polishing K180, K240, K320, K400, K600, K800

Main materials: 1.4301/304, 1.4307/304L, 1.4301/304//1.4307/304L, 1.4541/321, 1.4401/316, 1.4404/316L (other materials on request)

## Product information

Standard sizes: on customers request; max. width 2500 mm, max. length 15000 mm

Inside core of the coils: 508 mm, 610 mm

Condition: cold rolled, hot rolled

Special treatment: annealed and pickled, polished K180 up to K800 upon request

Tolerances: according DIN EN ISO 9445-1/-2

Specifications: according ASTM A240, ASTM A480, EN 10088-2, EN 10259, AD 2000 W0

Warranty: MTC mill test certificate according EN 10204-2.2 and EN 10204-3.1

# Stainless steel coils

---

## Material specification

Our stainless steel coils are available according the following schedule:

Grade	Thickness	Surface
304/304H	0.25 - 12 mm	2B, BA, No. 4, 8K, SB, HL, No. 1
304L	0.50 - 12 mm	2B, BA, No. 4, 8K, SB, HL, No. 1
304/304L	0.50 - 12 mm	2B, BA, No. 4, 8K, SB, HL, No. 1
321	0.50 - 12 mm	2B, BA, No. 4, 8K, SB, HL, No. 1
316/316L/316Ti	0.50 - 12 mm	2B, BA, No. 4, 8K, SB, HL, No. 1
317Ti	0.50 - 12 mm	2B, No. 4, No. 1
409L	0.40 - 2.5 mm	2B, 2D
430	0.40 - 3.0 mm	2B, BA, No. 4, 8K, SB, HL
443	0.40 - 2.0 mm	2B, KB
436L/439/444/441	0.50 - 3.0 mm	2B
304J1	0.40 - 3.0 mm	2B, BA, No. 4, 8K, SB, HL

## Specialities

Cutting and slitting services

Slit coils width from 20 mm up to 2150 mm

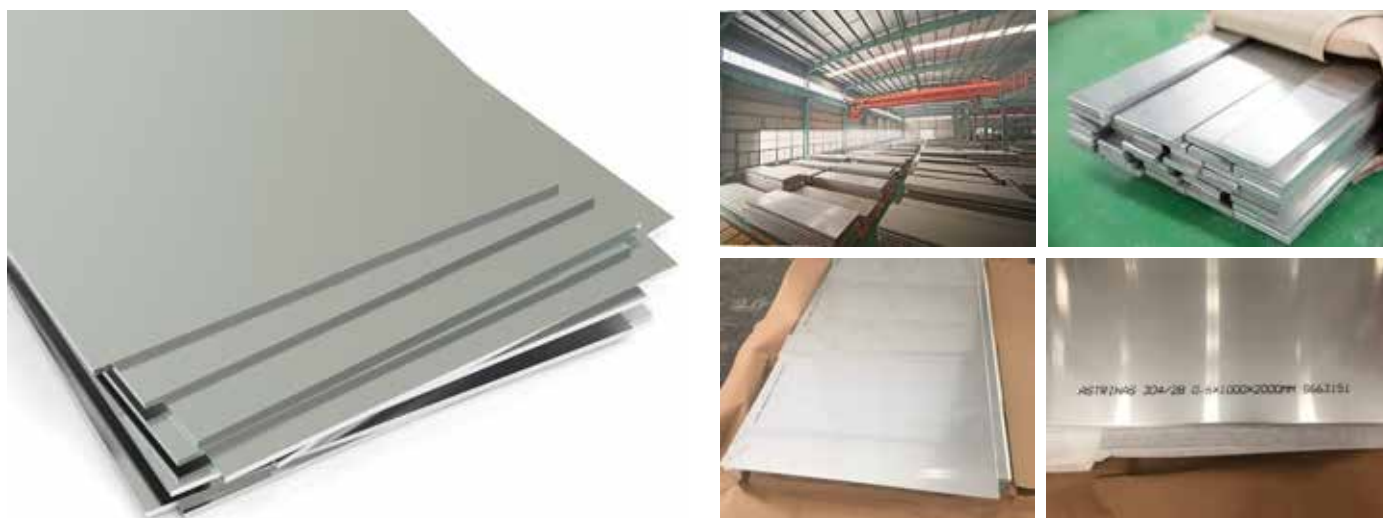
Thin and mid thickness coils polishing

The main customers are service centres sold through international importers, wholesalers and regional traders to their markets.

Furthermore we offer various mechanical and surface treatment for all our own manufactured products.

# Stainless steel sheets

---



## Stainless steel sheet manufacturing

Due to the high demand in the market from our customers for our high quality products we did further investments in the production of stainless steel sheets.

We produce a wide variety of stainless steel sheets in different standard and customized dimensions. They are a broad range of applications in any industry. The products are produced under environmental supervision and all our products are manufactured with first quality raw material. All our products have an excellent corrosion and heat resistance. The average stock effective is more than 1'000 metric tons of stainless steel materials, becoming the largest on-hand stainless steel products platform with complete range for all our customers.

## Important facts about our factory

Capacity: 300'000 metric tons per year

Number of equipment: 23

Number of mould workshops: 2

Standards: DIN EN 10088-2/-3, DIN EN ISO 9445-2, DIN EN ISO 9444-2, DIN EN 10028-7, DIN EN 10029, DIN EN 10051, DIN EN 10048

Surface treatment: polishing K180, K240, K320, K400, K600, K800

Main materials: 1.4301/304, 1.4307/304L, 1.4301/304//1.4307/304L, 1.4541/321, 1.4401/316, 1.4404/316L (other materials on request)

## Product information

Standard sizes: length 2000 – 6030 mm x width 1000 – 2500 mm x thickness 0.25 – 150 mm

Condition: cold rolled, hot rolled

Special treatment: annealed and pickled, polished K180 up to K800 upon request

Tolerances: according DIN EN ISO 9445-1/-2, DIN EN 10029, DIN EN 10051, DIN EN 10048

Specifications: according ASTM A240, ASME SA240, EN 10088-2 and EN 10028-7, AD 2000 W2-W10

Warranty: MTC mill test certificate according EN 10204-2.2 and EN 10204-3.1

# Stainless steel sheets

---

## Material specification

Our stainless steel sheets are available according the following schedule:

Grade	Thickness	Surface
304/304H	0.25 - 12 mm	2B, BA, No. 4, 8K, SB, HL, No. 1
304L	0.50 - 12 mm	2B, BA, No. 4, 8K, SB, HL, No. 1
304/304L	0.50 - 12 mm	2B, BA, No. 4, 8K, SB, HL, No. 1
321	0.50 - 12 mm	2B, BA, No. 4, 8K, SB, HL, No. 1
316/316L/316Ti	0.50 - 12 mm	2B, BA, No. 4, 8K, SB, HL, No. 1
317Ti	0.50 - 12 mm	2B, No. 4, No. 1
409L	0.40 - 2.5 mm	2B, 2D
430	0.40 - 3.0 mm	2B, BA, No. 4, 8K, SB, HL
443	0.40 - 2.0 mm	2B, KB
436L/439/444/441	0.50 - 3.0 mm	2B
304J1	0.40 - 3.0 mm	2B, BA, No. 4, 8K, SB, HL

## Specialities

Cutting and slitting services

Flat bars slit from strip (sheets)

Thin and mid thickness sheets polishing

Surface polishing for hot rolled sheets

The main customers are international importers, wholesalers and regional traders who sell the products to their markets.

Furthermore we offer various mechanical and surface treatment for all our own manufactured products.

# Stainless steel accessories

---



## Stainless steel accessories manufacturing

We can offer a wide range of standardised stainless steel accessories and as well according drawing. Our main products are stainless steel accessories for decoration for any industry in the most important stainless steel qualities. We also offer products in special steel alloy according your requirements.

With our top modern manufacturing site we are strategically well equipped to guarantee all the goods in high quality, best lead times and workable prices.

## Important facts about our factory

Capacity: 1'000 – 5'000 pieces per day (depending on the size)

Production mode: casting and CNC machines

Standards: according general international casting and turning norms

Surface treatment: K180, K240, K340, K400, K600

Main materials: 1.4301/304, 1.4307/304L, 1.4401/316, 1.4404/316L

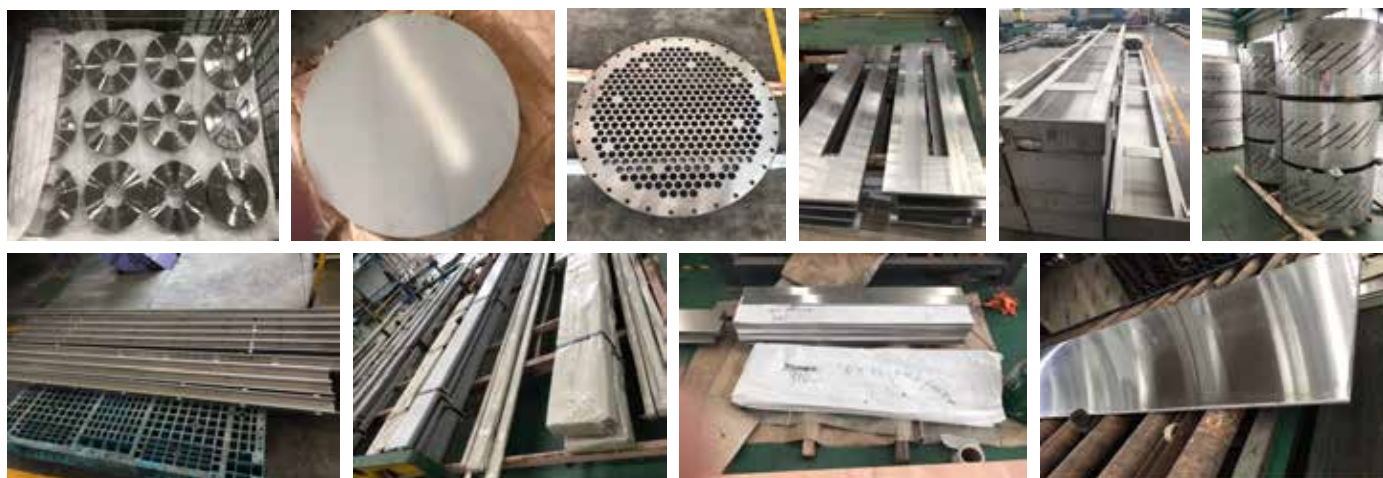
The main markets are glass clamps, handrail covers, stair posts, handrail balls, tube fixed bases, handrail brackets, all kind of connectors for stairs and handrails, flanges, decoration covers, elbows, adjustable elbows and so on sold through international importers, wholesalers and regional traders to their markets.

Furthermore we offer various mechanical and surface treatment for all our own manufactured products including personalisation of the main products.



# Stainless steel individual products

---



## Stainless steel individual product manufacturing

We can produce a wide variety of stainless steel individual products for different applications and according customized requirements. They are a broad range of applications in any industry. The products are produced under environmental supervision and all our products are manufactured with first quality raw material. All our products have an excellent corrosion and heat resistance. The average stock effective of the raw material is more than 1'000 metric tons of stainless steel materials, becoming the largest on-hand stainless steel products platform with complete range for all our customers.

## Important facts about our factory

Capacity: 300'000 metric tons per year

Number of equipment: 23

Number of mould workshops: 2

Standards (raw material): DIN EN 10088-2/-3, DIN EN ISO 9445-2, DIN EN ISO 9444-2, DIN EN 10028-7, DIN EN 10029, DIN EN 10051, DIN EN 10048

Surface treatment: polishing K180, K240, K320, K400, K600, K800

Main materials: 1.4301/304, 1.4307/304L, 1.4301/304//1.4307/304L, 1.4541/321, 1.4401/316, 1.4404/316L (other materials on request)

## Production facilities

All the products are made with our own manufactured stainless steel sheets in premium quality. The production facilities are unlimited due to our machinery from small parts to big parts for any industry.

The main markets are construction, aerospace and defence, chemical processing industries, oil and gas, electrical energy, medical, automotive, food equipment and appliance, mining, transportation and electronics and any industrial purpose sold through international importers, wholesalers and regional traders to their markets.

# Brass components

---



## Brass manufacturing

We can offer brass precision turned parts like cable glands for electrical and wiring industry, lamp parts for lamp and lighting Industry, automotive components for automobiles Industry, brass inserts for moulding industry, brass plumbing fittings for sanitary ware industries, brass precision component for hi-tech applications as per drawing and samples. Using our extensive knowledge and experience we are able to produce components to your exact requirements in quality, cost and delivery time. We also can offer special brass alloy products according your requirements.

With our two modern brass manufacturing sites we are strategically well equipped to guarantee all the goods in high quality, best lead times and workable prices.

## Important facts about our factories

Capacity: 3'000 metric tons per year

Number of turning machines: 34

Number of CNC machines: 5

Number of casting furnaces: 2

Number of mould workshops: 2

Main brass alloys: Cz121, Cz122, CUZN39PB3, MS58 and C360 (other brass alloys on request)

All the supplied parts are totally compatible and interchangeable with the corresponding original parts. The critical dimensions and tolerance levels are in accordance with the original equipment specifications. We adopt stringent quality control policy to ensure that our products have quality par excellence.

Manufactured objects can be supplied after undergoing machining operations, single spindle automatic bar turning machines, lathes, and second operation like milling, drilling and threading.

Furthermore we offer the surface treatment for all our own manufactured products. Most of the products for outdoor applications are nickel plated against oxidation, galvanized or coated surface treatments are also available.

# Brass components

---

## Quality guarantee

Instruments like profile projector with geometry dro, digital vernier calliper, screw gauge micrometre, inner groove measuring instrument and all types of rind and plug gauges according to international thread types are available.



## Main manufacturing facilities

- High precision turning diameter from 5 mm up to 50 mm
- Turning length up to 70 mm
- High quality of precision turned parts and automatic machined components, mainly in brass materials
- Large, medium and small volume production

## Finishing

Adding value to the supply of machined components and reducing customer input, we have the in-house expertise to source finishing operation to meet all the customers exact standard.

Our primary business involves the manufacture and supply of high quality turned part fittings and assemblies into the following market sectors:

## Product range

Brass lamp parts  
Hydraulic and pneumatic fittings  
Plumbing fittings  
Inserts for moulding  
Fuse gear and switchgear  
Hose and garden couplings  
Sanitary fittings  
Automotive industries  
Electrical industries

The main markets are electrical, sanitary, machinery, vehicle manufacturing and any industrial purpose sold through international importers, wholesalers and regional traders to their markets.

# Packaging & Shipment

---



## Packaging

Any product needs suitable transport packaging. For the packaging of the manufactured goods we use qualified and good quality packaging material. We take care anytime for correct packaging material of the supplied goods to avoid any chemical reaction during the whole transport.

Furthermore we offer as well individual and customized packing solutions for all our products. Customized packaging with customer logos and so on are no problem for us and are as an implicitness for all our customers.

## Shipment

The loading process into containers and trucks of all our manufactured goods will be anytime in-house to protect the products against outside influences.

We load the containers and trucks with professional and suitable tools. Our professional and very solid packaging protect all the products completely during the transport, as well with eventual transshipping, until the final destination.

The shipment to all our customers is done by truck for an easier unloading process in their warehouse. In case of sea-freight we unload the container in our own warehouse near to the sea-port and load the products into trucks. Special agreements and transportation requirements are anytime possible.

## Storage

Generally we supply our products through our competent logistic solution directly to our customers or their end-users. Shipments on time are anytime possible according separate agreement. Intermediary storage of the ordered goods are as well no problem for us.

In all our manufacturing plants we have the possibility to stock the material and also customized individual produced products. Additionally we have a further warehouse near to the European sea-port in Hamburg where we can stock the goods and supply them for example in partial shipments or on time as agreed with the customer. All the products are handled in-house to guarantee best requirements to assure our high quality for the whole product including packaging.



# Services

---



To be more professional and competitive in the market we offer a complete and professional service package to all our partners, customers and suppliers and generally everybody can profit from our services and competences.

Our main competences are based in the logistic services and the export and import trade finance as well for international business opportunities.

## **Logistic services**

We are working exclusively with a renowned international forwarding and logistic specialist on a long-term business relationship. Our logistic service provider is present in the most important importing and exporting countries worldwide and can provide the best possible logistic services. Further to this we can handle all the documents, customs clearance and taxation in each country very carefully. Special terms in different countries for imported products are no problem for us to handle them professionally. We offer a full logistic service to all our customers.

## **Export and import trade finance**

A solid financial base and the knowledge of the international business terms are a must for any successful international business opportunity. We collaborate very closely with one of the most famous and trustable bank institution of Switzerland and we are committed to fulfil all the financial requirements to our partners, customers, suppliers and service providers. Special payment agreements, methods, and procedures, especially for the import and export business, are anytime possible and no problem for us.

## **Product research and other services**

Due to our big network to many reliable manufacturers for different industrial products, especially in the Asian countries, we can find the right product for our customers according their requirements. We can act as their agent for the product research and supervise the whole purchase process from the order until the shipment to the final destination. The aftersales services are realised through our professional sales team.

For all our partners, customers, suppliers and service providers we are anytime at disposal to support their requirements for any extra service such as supporting for exhibitions, marketing campaigns, surveys etc. We simply have to know the exact plans and requirements so that we can start into action.



# Manufacturing plants

---



Our manufacturing plants are mostly based in Asia, especially in China and India. Due to our continuous investments into our own manufacturing plants we are committed to supply highest quality with workable prices for any industrial product according our product range.

We push our brand **astrinas** in the market for all our products as the definition for high quality products with best reputation.

## Aluminium

Nanjing CN (aluminium profiles)  
Foshan CN (aluminium accessories)

## Stainless steel

Foshan CN (stainless steel tubes)  
Nantong CN (stainless steel tubes)  
Taizhou CN (stainless steel bars and angles)  
Wuxi CN (stainless steel coils and sheets, stainless steel individual products)  
Taicang CN (stainless steel accessories)

## Brass

Jamnagar IN (brass components)  
Taicang CN (brass components)

# Common stainless steels

Common stainless steels										
	316T designations		Chemical composition ASTM/EN standards (major elements only) % content is a maximum unless a range is indicated							Welding consumables
	ASTM	EN	C	Mn	Cr	Ni	Mo	N	Other	
Martensitic	410		0.15		11.5/13.5	0.75				Strengthened by heat treatment, very poor weldability, not generally welded
		1.4006	0.08/0.15		11.5/13.5					
	420		0.15		12.0/14.0					
		1.4021	0.16/0.25		12.0/14.0					
	431		0.2		15.0/17.0	1.25/2.5				
		1.4507	0.12/0.22		15.0/17.0	2.5				
	440A		0.6/0.75		16.0/18.0		0.75			
	440B		0.75/0.95		16.0/18.0		0.75/0.9			
		1.4112	0.85/0.95		17.0/19.0		1.3			
Ferritic	440C		0.95/1.2		16.0/18.0		0.75/0.9			Weldability poor, generally only welded in thinner gauges, welding mostly advantageous, If filler wire is used, 309L is preferred
		1.4125	0.95/1.2		16.0/18.0		0.8			
		1.4003	0.03		10.5/12.5	0.3/1.0		0.03		
	3CR12		0.03		10.5/12.5	1.5				
	409		0.03		10.5/11.7	0.5		0.03		
		1.4512	0.03		10.5/12.5					
	430		0.12		16.0/18.0	0.75				
		1.4016	0.08		16.0/18.0					
		1.4509	0.03		17.5/18.5			0.045		
	439		0.07		17.0/19.0	0.5	0.04			
		1.4510	0.05		16.0/18.0					
	444		0.025		17.5/19.5	1.0	1.8/2.5	0.035		
Duplex		1.4521	0.025		17.0/20.0		1.8/2.5			
	446		0.02		23.0/27.0	0.75		0.25		
		1.4762	0.12		23.0/26.0					
	2304		0.3		21.5/24.5	3.0/5.5	0.1/0.6	0.05/0.2		2304/2205
		1.4362	0.3		22.0/24.0	3.5/5.5	0.1/0.6	0.05/0.2		
	2101	1.4162	0.04	4.0	21.0	1.35	0.1	0.2		2205
Austenitic	2205		0.3		22.0/23.0	4.5/6.5	3.0/3.5	0.14/0.2		
		1.4462	0.3		21.0/23.0	4.5/6.5	2.5/3.5	0.1/0.22		2507
	2507		0.3		24.0/26.0	6.0/8.0	3.0/5.0	0.24/0.35		
		1.4410	0.3		24.0/26.0	6.0/8.0	3.0/4.5	0.2/0.35		309L
	201	1.4372	0.15	5.5/7.5	16.0/18.0	3.5/5.5		0.25		
	201L		0.3	5.5/7.5	16.0/18.0	3.5/5.5		0.25		308L
		1.4371	0.3	6.0/8.0	16.0/17.0	3.5/5.5		0.15		
	301		0.15		16.0/18.0	6.0/8.0		0.1		309L
		1.4373	0.05/0.15		16.0/19.0	6.0/9.5	0.8	0.11		
	304		0.08		18.0/20.0	8.0/10.5		0.1		310L
		1.4301	0.07		17.0/19.5	8.0/10.5		0.11		
	304L	1.4307	0.03		18.0/20.0	10.0/12.0		0.1		316L/318
	309		0.2		22.0/24.0	12.0/15.0				
		1.4828	0.2		19.0/21.0	11.0/13.0		0.11		316L/316Nb
	309S		0.08		22.0/24.0	12.0/15.0				
		1.4833	0.15		22.0/24.0	12.0/14.0		0.11		316Nb
	310		0.25		24.0/26.0	19.0/22.0				
		1.4841	0.2		24.0/26.0	19.0/22.0		0.11		347
	310S		0.08		24.0/26.0	19.0/22.0				
		1.4845	0.1		24.0/26.0	19.0/22.0		0.11		904L
	316		0.08		16.0/18.0	10.0/14.0	2.0/3.0	0.1		
		1.4401	0.07		16.5/18.5	10.0/13.0	2.0/2.5	0.11		316Nb
		1.4436	0.05		16.5/18.5	10.5/13.0	2.5/3.0	0.11		
	316L		0.03		16.0/18.0	10.0/14.0	2.0/3.0	0.1		347
		1.4404	0.03		16.5/18.5	10.0/13.0	2.0/2.5	0.11		
		1.4432	0.03		16.5/18.5	10.5/13.0	2.5/3.0	0.11		904L
	316Ti		0.08		16.0/18.0	10.0/14.0	2.0/3.0	0.1	Ti stabilised	
		1.4571	0.08		16.5/18.5	10.5/13.5	2.0/2.5		Ti stabilised	904L
	321	1.4541	0.08		17.0/19.0	9.0/12.0			Ti stabilised	
	347	1.4550	0.08		17.0/19.0	10.0/13.0			Ti stabilised	904L
	904L		0.02		19.0/23.0	23.0/28.0	4.0/5.0	0.0/0.15	1.0/2.0 Cu	
		1.4539	0.02		19.0/21.0	24.0/26.0	4.0/5.0		1.2/2.0 Cu	

## Notices

## Notices



**astrinas**

astrinas  
Asian Trade and Investment Ltd.  
Balz-Zimmermann-Strasse 7  
CH-8152 Glattbrugg

Phone: 0041 32 510 61 30  
E-Mail: [info@astrinas.com](mailto:info@astrinas.com)  
Skype: astrinas1  
Internet: [www.astrinas.com](http://www.astrinas.com)