

PRECISION

WEATHER

INSTRUMENTS

Weather Monitoring Systems for

Home, School, Industry & Agriculture

- TRANSMITS WIRELESSLY UP TO 1000'—OR FOR MILES ON END WITH OUR LONG-RANGE REPEATERS
- UPDATES EVERY 2½ SECONDS
- POST WEATHER DATA DIRECTLY TO THE INTERNET WITHOUT A PC! SEE PAGE 13.



What's New?

Now you can post your weather data directly to the Internet without a PC! Not a web guru? Don't worry—our latest version of **WeatherLink** does all the work for you. For details, see **page 13**.

Want to show your Davis spirit? Or maybe you're looking for the perfect gift for the weather buff in your life? Check out our exclusive **logo wear**—hats, t-shirts, and polo shirts—on **page 14**.

We continue to hear from Davis fans across the nation and around the world. Here's just a sampling of what they have to say:

"As an avid follower of your products since 1995, I've continued to see them everywhere! YEAH DAVIS! I'm flattered to use the same stations as multi-million dollar NASCAR teams!"
—Dallas, Texas

"During last hurricane season we clicked on to several Davis weather station links to follow the storms. We had better information than some of the news stations thanks to these weather stations!"
—Laughlin, Nevada

"Our Vantage Pro2 has been installed as a remote system on a mountain in Peloponnisos. It is worth noting that the next professional alternative to this station costs in excess of 6,000 USD!"
—Athens, Greece

"I have worked with Davis Instruments before, and their customer support is among the best I have ever seen. Absolutely top notch."
—Pacifica, California

If you've got a story or photo of your weather station in action to share, we'd love to hear from you. Send your stories and photos to news@davisnet.com.

Contact Us

As always, please contact one of our customer service representatives if you have any questions. We're always glad to help.

(800) 678-3669 Toll-Free Order Line, Monday through Friday, 7:00 a.m. to 5:30 p.m. Pacific Time. Our representatives can answer most questions and assist you with your purchase.

(510) 732-9229 For callers outside the USA or Canada.

(510) 732-7814 For answers to technical questions or help with trouble-shooting.

(510) 670-0589 Fax to Customer Service or Tech Support.

www.davisnet.com Visit our web site.

sales@davisnet.com E-mail to Customer Service.

support@davisnet.com E-mail to Technical Support.

info@davisnet.com General e-mail.



The GLOBE Program

Students of all ages can participate in the worldwide GLOBE program with the new protocols developed just for Davis weather stations. See www.globe.gov.

GLOBE, The GLOBE Program, and the GLOBE logo are trademarks of the U.S. Government. Use of these trademarks and certification by this company that its products conform to specifications of The GLOBE Program do not imply endorsement of this company or its products by the U.S. Government.

With Vantage Pro2™, our wireless

The first and only stations in their price range to use frequency-hopping spread spectrum radio, our wireless Vantage Pro2s transmit and receive data up to 1000' (300 m) line of sight. That's over three football fields in length—and three times farther than competing stations! At the same time, we've kept all the features that have made Vantage Pro famous. You'll get highs and lows (and/or totals or averages) for virtually all weather variables for the last 24 days, months, or years, and your own local forecast—all without a PC.

Graph icon shows which function is currently being displayed on the graph.

View current data or highs and lows for up to 24 different days, months, or years.

Inside compass rose, view wind direction to 1° resolution. Or view wind speed.

Compass rose with 16 compass points shows current and dominant wind direction.


Set over 70 alarms for multiple functions simultaneously.


Graph last 24 hours, days, or months of readings or highs and lows. View over 80 graphs including additional analysis of temperature, rain, rain rate, wind, and barometric pressure. All without a computer!

Vertical scale changes depending on what you are graphing.



Look for the following logos throughout the catalog:

 Identifies the stations or sensors that may be NIST certified. See page 20 for details.

 Identifies stations suitable for use with the GLOBE protocol.

Ticker-tape display shows expanded forecast details and additional information on current conditions. Over 100 different messages!

weather stations are now better than ever.

Vantage Pro2 Features:

- Large 3½" × 6" (9 × 15 cm) LCD screen.
- Updates every 2½ seconds, so you'll always be on top of changing weather conditions.
- Backlit display for easy viewing.
- U.S. and metric units of measure.
- Optional WeatherLink data logger and software for even more analysis.

Forecast icons let you know whether to expect sun, part sun, clouds and rain, or snow.

Eight phases of the moon, from new moon through full moon.

Time and date fields let you view:

- Time of sunrise and sunset
- Current time and date
- Time and date of highs and lows
- Time and date of graphed data point

Wireless stations use frequency-hopping spread spectrum radio. You'll get three times the transmission distance, improved reception through multiple walls, and greater immunity from RF interference.

Five-position trend arrow shows whether barometric pressure is rising, falling, or stable.

Fixed display area shows the most important weather variables at all times.

Variable display area lets you pick between:

- Inside or additional temperatures or soil moisture
- Inside or additional humidity, UV index, or leaf wetness
- Wind chill, dew point, or two different heat indices

Plus and minus keys simplify data entry.

Use arrow keys to scroll through data on graph or view highs and lows over time.

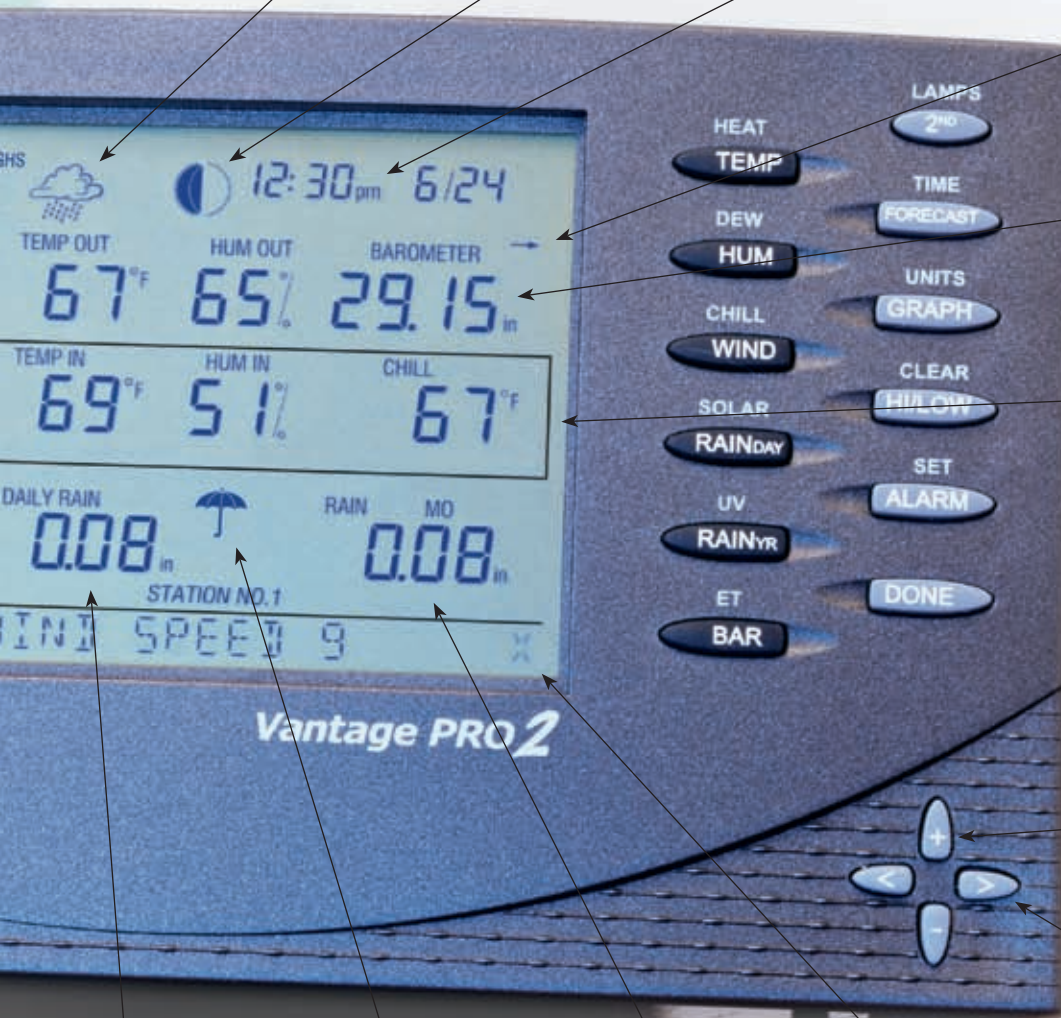
View daily rain or rain for this storm.

Umbrella icon appears when it is currently raining.

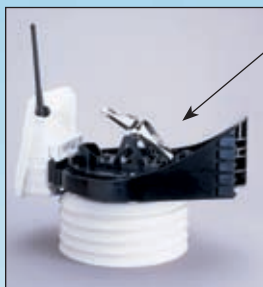
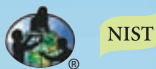
View monthly or yearly rainfall, rain rate, evapotranspiration, or intensity of solar radiation.

Blinks to let you know that data is being received.

Optional sensors or stations are required to view additional temperatures or humidities, soil moisture, UV index, solar radiation, and evapotranspiration.



Vantage Pro2™ weather stations are available in both wireless and cabled versions. All include a console and our innovative integrated sensor suite, which combines our rain collector, temperature and humidity sensors, and anemometer all into one package—making setup easier than ever and improving performance and reliability. Customize your weather station by adding additional consoles or one or more of the special-purpose stations shown on the following pages. Because regulations vary, wireless stations may or may not be available outside the USA.



The aluminum-plated **tipping bucket** in our rain collector is self-emptying, corrosion resistant, and laser calibrated for exceptional accuracy.

Anemometer includes both wind speed and wind direction sensors. Rugged components stand up to hurricane-force winds, yet are sensitive to the lightest breeze. Wind-tunnel tested to speeds in excess of 170 miles per hour (274 km/h).

Unlike the smaller rain collectors sold elsewhere, our **rain collector** meets the guidelines of the World Meteorological Organization. Reads rainfall amounts in 0.01" or 0.2 mm increments.

Weather-resistant shelter houses electronic components for added protection against the elements.

Wireless integrated sensor suite runs on solar power. Lithium battery provides backup at night and during cloudy, wintry days. (Solar panel is not included with cabled version.)

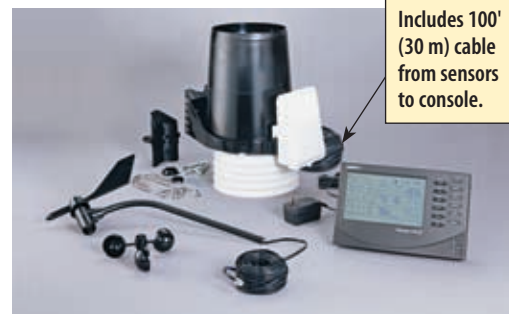
Models with **24-hour fan-aspirated radiation shields** include additional radiation shield plates and a second solar panel, which powers the motor-driven fan.

Temperature and humidity sensors are located inside the radiation shield. The shield protects the sensors from solar radiation and other sources of radiated and reflected heat.

Optional mounting pole is just one of several installation options. For more, including our mounting tripod, see page 8.

6153 Wireless Vantage Pro2 with 24-Hour Fan-Aspirated Radiation Shield

Most components are factory assembled, so setup is as easy as possible. Just a few simple installation steps, and you're done.



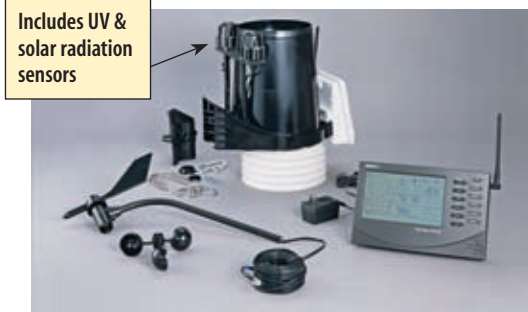
Includes 100' (30 m) cable from sensors to console.

6152C Cabled Vantage Pro2



Includes solar-powered transmitter

6152 Wireless Vantage Pro2



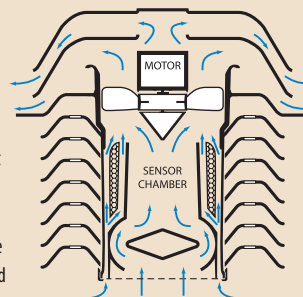
Includes UV & solar radiation sensors

6162 Wireless Vantage Pro2 Plus

24-Hour Fan-Aspirated Radiation Shield





Models 6153 and 6163 include our patented 24-hour fan-aspirated radiation shield for maximum accuracy of temperature and humidity readings.

A motor-driven fan draws air through the sensor chamber 24 hours a day, 7 days a week. Air flow across the sensors is 500 feet per minute (2.5 m/s). At night, when the effects of radiation are less, the solar-powered model runs on battery



power and the air flow is 280 feet per minute (1.4 m/s). In far northern or southern latitudes, or in areas with extended periods of heavy cloud cover, there may not be enough sunshine to power the fan or recharge the battery during the winter. However, as the level of sunlight goes down, the need for fan aspiration also diminishes. The fan will start running and the battery will recharge as soon as sufficient sunlight returns.

Available in six different models. Choose the one that's right for you.

	<p>Choose a cabled station for most economical installation. Ideal for areas where lightning risk is minimal.</p>		<p>Choose wireless for easiest installation, additional sensor options, and reduced risk of lightning damage.</p>		<p>Choose a model with 24-hour fan aspiration for maximum accuracy of temperature & humidity readings.</p>		
							
	<p>6152C Cabled Vantage Pro2</p>	<p>6162C Cabled Vantage Pro2 Plus</p>	<p>6152 Wireless Vantage Pro2</p>	<p>6162 Wireless Vantage Pro2 Plus</p>	<p>6153 Wireless Vantage Pro2 with 24-Hour Fan-Aspirated Shield</p>	<p>6163 Wireless Vantage Pro2 Plus with 24-Hour Fan-Aspirated Shield</p>	
	<p>\$495</p>	<p>\$895</p>	<p>\$595</p>	<p>\$995</p>	<p>\$795</p>	<p>\$1195</p>	
<p>Console</p>	<p>Should be run using the included AC-power adapter. Add three C batteries (not included) for backup during power outages.</p>	●	●				
	<p>May be run full-time using three C batteries (not included). May also be run using the included AC-power adapter.</p>			●	●	●	●
<p>Integrated Sensor Suite</p>	<p>Includes rain collector, temperature and humidity sensors, and anemometer. UV and solar radiation sensors are optional.</p>	●		●		●	
	<p>Includes sensors listed above, plus pre-installed UV and solar radiation sensors. Save \$135 compared to the cost of purchasing these sensors and the sensor mounting shelf separately!</p>		●		●		●
	<p>Includes 100' (30 m) cable for transmitting data from integrated sensor suite to console. May be extended to 1000' (300 m) with optional extension cables.</p>	●	●				
	<p>Includes solar-powered transmitter with battery backup. Transmits up to 1000' (300 m) outdoors, line of sight. Typical range through walls under most conditions is 200' to 400' (60 to 120 m). Range may be extended even further—for miles on end—with optional repeaters.</p>			●	●	●	●
<p>Radiation Shield</p>	<p>Standard radiation shield protects temperature and humidity sensors from solar radiation and reflected heat from rooftops or pavement. Optional Daytime Fan-Aspirated Radiation Shield Kit may be added to further reduce the effects of daytime radiation.</p>	●	●	●	●		
	<p>Includes 24-hour fan-aspirated radiation shield. Solar-powered fan with battery-backup draws air through the sensor chamber and exhausts it through the top of the shield for maximum accuracy of temperature and humidity readings.</p>					●	●
<p>Options</p>	<p>Add additional console/receivers to view data in more than one location.</p>			Optional	Optional	Optional	Optional
	<p>Add one or more special-purpose stations to read leaf wetness or soil moisture, or to read temperature and humidity in additional locations.</p>			Optional	Optional	Optional	Optional

Add special-purpose stations or sensors.

Build your own customized weather station by adding one or more options or special-purpose stations. Each wireless Vantage Pro2 console/receiver can receive data from up to eight different transmitting stations. Start with one of our wireless Vantage Pro2 or Vantage Pro2 Plus stations (which include both the console and the integrated sensor suite), and add up to seven Temperature or Temperature/Humidity Stations. Or buy the Vantage Pro2 console alone (without the integrated sensor suite), and add up to eight special-purpose stations of your choice.

See the chart on page 21 for maximum number of each station type.



In Canton, Georgia, Andy and Angi Mills grow tomatoes, peppers, and okra with the help of a Wireless Leaf & Soil Moisture/Temperature Station.



Wireless Leaf & Soil Moisture/Temperature Station

Solar-powered station includes transmitter and backup battery inside weather-resistant shelter. To view the data, add a wireless Vantage Pro2 console/receiver, or Weather Envoy and WeatherLink. Each can receive data from *either*:

- A single fully-populated station with two leaf wetness sensors, four soil moisture sensors, and four temperature probes,
- or*
- Two partially-populated stations, one with two leaf wetness sensors and two temperature probes, and the other with four soil moisture sensors and four temperature probes.

Available in two models. Choose the model without sensors, and add only those you need to meet your requirements. Or choose the Complete Soil Moisture/Temperature Station, and add one or two leaf wetness sensors as desired.

6345 Wireless Leaf & Soil Moisture/Temperature Station without sensors \$195

6345CS Complete Soil Moisture/Temperature Station with 4 soil moisture sensors and 4 temperature probes \$545

For teachers participating in the GLOBE program, see the special protocol developed for the 6345CS at www.globe.gov, or visit our website at www.davisnet.com/links.

Leaf Wetness Sensor

Use to monitor the level of surface moisture on foliage, with range from 0 (completely dry) to 15 (saturated). Add up to two sensors to a single Wireless Leaf & Soil Moisture/Temperature Station. Includes 40' (12 m) cable.

6420 Leaf Wetness Sensor \$95



Soil Moisture Sensor

Watermark® soil moisture sensor uses electrical resistance to measure the moisture level of the soil. Does not require periodic maintenance during the growing season. Simply bury at the desired depth, then monitor moisture levels throughout the season. Add up to four sensors to a single Leaf & Soil Moisture/Temperature Station. Includes 15' (4.6 m) cable.

6440 Soil Moisture Sensor \$50



Stainless Steel Temperature Probe

Multi-purpose temperature probe with 2½" (64 mm)-long stainless steel housing. Use to measure temperature of air, soil, or water. Add up to four probes to a single Leaf & Soil Moisture/Temperature Station. Includes 15' (4.6 m) direct-burial cable.

6470 Stainless Steel Temperature Probe \$40



Wireless Temperature/Humidity Station

Battery-powered station includes temperature and humidity sensors inside protective radiation shield, and transmitter and lithium battery inside weather-resistant shelter. Expected battery life is six to nine months. To view the data, add a wireless Vantage Pro2 console/receiver or Weather Envoy and WeatherLink. Includes hardware for mounting on fence post or pole. Mounting pole is not included.

6382 Wireless Temperature/Humidity Station \$235



Wireless Temperature Station

Battery-powered station includes stainless steel temperature probe with 12' (3.6 m) cable, transmitter and battery inside weather-resistant shelter, and mounting hardware. To view the data, add a wireless Vantage Pro2 console/receiver, or Weather Envoy and WeatherLink. Expected battery life is six to nine months.

6372 Wireless Temperature Station \$185



Anemometer Transmitter Kit

Solar-powered kit for use with wireless Vantage Pro2 or Pro2 Plus. Allows you to mount the anemometer in a different location than the rain collector and the rest of the integrated sensor suite, up to 1000' (300 m) from the console/receiver. For longer distances, add one or more wireless repeaters. Kit includes transmitter inside weather-resistant shelter, solar panel, battery, and mounting hardware.

6332 Anemometer Transmitter Kit \$170

Solar Radiation Sensor

To measure solar radiation and solar energy. Diffuser element and housing are carefully designed for accurate cosine response. Silicon photo diode provides good match to solar spectrum. Two-piece housing minimizes radiation heating, allows convection cooling of the sensor, and prevents the trapping of water or dust. To mount next to a rain collector, add our Sensor Mounting Shelf (not included).



6450 Solar Radiation Sensor \$160

Includes 2' (0.6 m) cable. Use Standard 4-Conductor Extension Cable. Maximum cable length is 125' (38 m) from sensor to integrated sensor suite.

7876-008 Cable, 8' (2.4 m) \$10 7876-040 Cable, 40' (12 m) \$18 7876-100 Cable, 100' (30 m) \$40

UV Sensor

Measures the sunburning portion of the UV spectrum. Allows you to display UV index, dose rate, and daily and accumulated dose. Multi-layer filter provides a spectral response that closely matches the Erythema Action Spectrum. Diffuser provides excellent cosine response. Two-piece housing minimizes radiation heating, allows convection cooling of the sensor, and prevents the trapping of water or dust. To mount next to a rain collector, add our Sensor Mounting Shelf (not included).



6490 UV Sensor \$350

Includes 2' (0.6 m) cable. (When sold pre-installed on a Vantage Pro2 Plus, includes 3' (0.9 m) cable.) Use Standard 4-Conductor Extension Cable. Maximum cable length is 125' (38 m) from sensor to integrated sensor suite.

7876-008 Cable, 8' (2.4 m) \$10 7876-040 Cable, 40' (12 m) \$18 7876-100 Cable, 100' (30 m) \$40



Daytime Fan-Aspirated Radiation Shield Kit

An economical solution for adding the benefits of fan aspiration to your wireless or cabled Vantage Pro2 or Pro2 Plus. Half the cost of our 24-hour fan-aspirated radiation shield, but nearly 75% as effective in reducing the effects of daytime radiation. Solar-powered fan runs during the day. Since there is no backup battery, the fan will cease running when night falls and the effects of radiation are less. Kit includes fan, solar panel, additional radiation shield plates, and hardware, as shown in inset photo. Larger photo shows the kit as installed on a wireless Vantage Pro2. Note that this kit is not compatible with our original Vantage Pro stations.

7747 Daytime Fan-Aspirated Radiation Shield Kit \$125



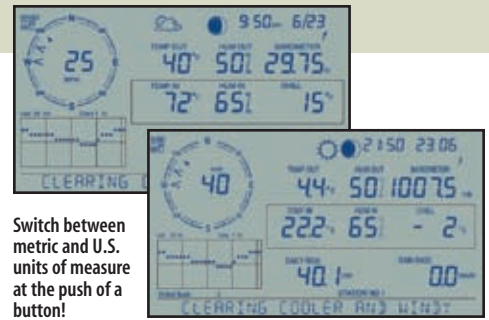
Attaches easily to the outside of the Vantage Pro2 integrated sensor suite.

Sensor Mounting Shelf

For mounting Vantage Pro2 solar radiation and/or UV sensors. Rigid shelf with anodized aluminum posts and stainless steel hardware attaches easily next to the rain collector on the outside of the integrated sensor suite.

6673 Sensor Mounting Shelf \$25

Add another console, and get the weather report wherever you are—indoors or out.



Vantage Pro2 Console/Receiver

To view data from a wireless Vantage Pro2 station in additional locations, or for use with any of the special-purpose wireless stations shown on the previous pages. Receive data directly from the outdoor sensors or use as a repeater, retransmitting the data from one console/receiver to another. Includes all the features shown on pages 2-3.

6312 Vantage Pro2 Console/Receiver \$295



Use the console on a desk or at a table.



Or mount it on a wall.

Customize your installation.



40' (12 m) Anemometer Cable

All Vantage Pro2 stations, whether wireless or cabled, include a cable that lets you mount the anemometer and rain collector up to 40' (12 m) apart. When the cable is not needed, simply lash the coil out of the way on your mounting pole. Hardware for mounting on a pole or post is included; mounting pole is not. Cable may be extended using optional extension cables. See page 20.

Included with Vantage Pro2 and Pro2 Plus



Mounting Pole Kit

Optional Mounting Pole Kit includes two galvanized steel poles, connector, and mounting hardware. Poles measure 19½" (0.50 m) and 21" (0.53 m) long. Assemble the two together to make a single 37½" (0.95 m) long pole. Outside diameter is 1⅜" (33 mm).

7717 Mounting Pole Kit \$35



Mounting Tripod

Optional tripod makes installation even easier. Brackets at the base of legs tilt to mount on roof or uneven terrain. Made of galvanized steel. Includes two 36⅜" (0.92 m)-long poles, which may be used separately or together to make a single 69¾" (1.77 m)-long pole.

7716 Mounting Tripod \$65

Extend the range of your wireless station—for miles on end!

For longer distances or to improve reception in troublesome areas, add one or more wireless repeaters. Use up to four repeaters in a daisy chain, retransmitting from a single Vantage Pro2 integrated sensor suite or special-purpose station. Or build a network of up to four repeaters and eight wireless stations, with some repeaters listening to multiple stations, each with their own unique ID. See the chart on page 21 for the maximum number of each station type. For use with a wireless Vantage Pro2 console/receiver or Weather Envoy with a firmware date of May 2005 or later. To use a repeater with one of these stations manufactured before that date, update the firmware using our Vantage Pro2 Updater.



Antennas for Long-Range Repeaters

For use with our long-range repeaters. Each repeater requires two antennas: one to receive the data, and another to retransmit it. Omni antennas transmit or receive in all directions. Yagi antennas transmit or receive from a single direction, but have a longer transmission distance. Mix or match to suit your needs; use the chart to determine the distance you'll be able to achieve depending on the antennas used.

7656 Omni Antenna \$160

7660 Yagi Antenna \$135



Standard Wireless Repeaters

Ideal for most applications. Uses the same dipole antenna found on all of our wireless stations. Range is up to 1000' (300 m) outdoors, line of sight. Typical range through walls under most conditions is 200' to 400' (60 to 120 m). AC-powered model includes power adapter. Solar-powered model includes solar panel and lithium backup battery.

7626 Standard Wireless Repeater, AC-Powered \$170

7627 Standard Wireless Repeater, Solar-Powered \$220



Long-Range Wireless Repeaters

In our testing, we achieved an incredible four miles (6.4 km) of transmission distance using two of our new long-range repeaters with Yagi antennas. We can't promise that you'll achieve quite the same results, since range is highly variable depending on antenna height, the terrain and foliage, buildings and other man-made structures, and RF interference. But we still think you'll be impressed! Ideal for agricultural or research applications where long distances are an issue. AC-powered model includes power adapter. Solar-powered model includes solar panel and lithium backup battery. Antennas are sold separately. In the USA, FCC regulations require that you select from the antennas shown below. Outside the USA, you will need to purchase third-party antennas in compliance with local regulations.

7653 Long-Range Repeater, AC-Powered \$220

7654 Long-Range Repeater, Solar-Powered \$270

Antenna Combination	Multiplier	Maximum Transmission Distance under optimal conditions **		
Dipole – Dipole *	1.00	1000'	0.2 mile	300 m
Dipole – Omni	1.58	1580'	0.3 mile	475 m
Dipole – Yagi	3.16	3160'	0.6 mile	950 m
Omni – Omni	2.50	2500'	0.5 mile	750 m
Omni – Yagi	5.00	5000'	1.0 mile	1500 m
Yagi – Yagi	10.00	10,000'	1.9 miles	3000 m

* Dipole antennas are found on all of our wireless weather stations and on our standard repeaters.

** Typical distance will be less. Outdoors, line of sight with minor obstructions or interference, typical distance is about 0.50 to 0.80 times the maximum. Through walls or in areas with high RF interference, typical distance may be as low as 0.20 to 0.40 times the maximum.

Vantage Pro2 Updater

Take advantage of the latest developments with our Vantage Pro2 Updater. Simply plug it into the port on your Vantage Pro2 console or Weather Envoy and press the start button. Your console or Envoy will be automatically updated with the latest version of our firmware. Future updates may be downloaded from our website at no charge.

6311VP2 Vantage Pro2 Updater \$125

Also available on loan for one-time use at a reduced cost. Contact our Customer Service or Tech Support Department for details. If your console or Envoy has a firmware date of December 2005 or later, you can also update the firmware from our website using any of our versions of WeatherLink (except the Mac versions). An Updater is not required.



On a budget? These stations offer professional quality at economical prices.

Our Weather Wizard III and Perception II offer sophisticated, professional quality for home, business, or scientific use. Add WeatherLink for detailed, long-term analysis using your PC, and you'll have a powerful computer weather station at a surprisingly affordable price.



See the Options & Accessories chart on page 18 for a complete look at which options may be used with which station.

Weather Wizard III®

The most-requested features at an economical price. Basic model includes inside and outside temperature, wind speed and direction, and wind chill. With the complete station, you'll also get daily and accumulated rainfall. You'd pay \$75 for the rain collector if purchased separately. Save \$20 with our Complete Weather Wizard III!

7425 Weather Wizard III \$195

7425CS Complete Weather Wizard III with rain collector \$250

NIST



Perception II®

An indoor weather station requiring no installation—just plug it in using the included AC-power adapter. Use to monitor your wine cellar, greenhouse, or other climate-dependent area. Measures temperature, humidity, and barometric pressure. So accurate, it's even used by automobile racers to tune their carburetors for current air density conditions. Backlit display for easy viewing.

NIST

7400 Perception II \$150



Rain Collector

Designed to meet the guidelines of the World Meteorological Organization, our self-emptying rain collector with tipping bucket is exceptionally accurate. Measures in 0.01" or 0.2 mm increments.

NIST

7852 Rain Collector for Wizard \$75

Includes 40' (12 m) cable. Use Standard 4-Conductor Extension Cable. Maximum cable length is 900' (270 m) from rain collector to console including junction box cable.

7876-008 Cable, 8' (2.4 m) \$10

7876-100 Cable, 100' (30 m) \$40

7876-040 Cable, 40' (12 m) \$18

7876-200 Cable, 200' (60 m) \$70

Radiation Shield

The most effective passive shelter available. Protects temperature sensor from solar radiation and other sources of radiated and reflected heat. Multi-plate construction for maximum airflow. Assembly required.



7714 Radiation Shield \$65

For Weather Wizard III or for Wireless Temperature Station or Leaf & Soil Moisture/Temperature Station

Perception II & Weather Wizard III



7425CS Complete Weather Wizard III

Both stations include the following features:

- Time in 12- or 24-hour format and date.
- U.S. and metric units of measure.
- Highs and lows.
- Sequential scan and display of readings.
- Alarms for selected functions.
- Calibration of some functions for increased accuracy under difficult conditions.
- Backlighting of LCD display for easy viewing (Perception II only).

Extension cables:

Be sure to use the appropriate extension cable listed for each component. See the complete chart on page 20. Although the RJ connector may fit, most standard telephone extension cords are not compatible.

Both stations include the following components:

- Console with reversible base for use on desk, shelf, or wall.
- AC-power adapter with battery backup (battery not included).

Weather Wizard III stations also include:

- Anemometer with 40' (12 m) cable for wind speed and direction
- Outside temperature sensor with 25' (7.6 m) cable
- Quick and easy plug-in cable connections using modular RJ connectors like those found on your telephone.

Optional for Weather Wizard III:

- Rain collector

Choose the station that suits your needs

	Perception II	Weather Wizard III	Complete Weather Wizard III
Barometric Pressure	•		
Inside Temperature	•	•	•
Outside Temperature		•	•
Wind Direction		•	•
Wind Speed		•	•
Wind Chill		•	•
Rainfall		Optional	•
Inside Humidity	•		

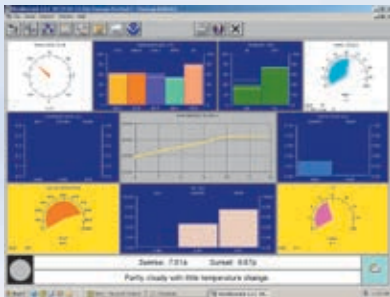
Weather Wizard III calculates and displays wind chill according to the original National Weather Service Formula. A new formula was adopted in 2001. For wind chill using this formula, view the data using WeatherLink or choose Vantage Pro2 instead.

Your weather data, your PC. What could be better?

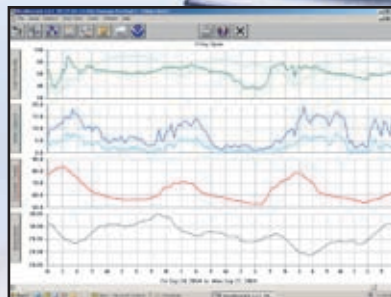
For the ultimate in weather monitoring, add WeatherLink® to any of our weather stations. The data logger fits neatly into the weather station console or Weather Envoy, storing weather data even when it's not connected to your PC. Later, download the data and use the software for detailed analysis and graphing. Available in ten different models. Our popular WeatherLink with standard data logger is ideal for most purposes, while other models add special features designed for specific user groups.

Data Storage & Transfer

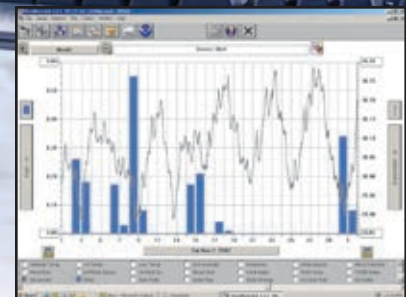
- **User-Selectable Storage Interval.** Choose 1, 5, 10, 15, 30, 60, or 120 minutes. Store up to six months' worth of data depending on the storage interval. (Up to four months for Perception or Weather Wizard III.)
- **Standard Data Logger Models.** Log and store data, even when the data logger is not connected to your PC. Transfer the data as often as you like, or leave the software running to transfer it automatically each day.
- **Internet Protocol Model.** Our newest model lets you see your weather data live on the Internet within minutes. No web skills or complicated setup required—WeatherLink does all the work for you!
- **Alarm Output & Irrigation Control Models.** Include our standard data logger plus a connector block that allows you to connect to your irrigation system, or to a heater, fan, or other device.
- **Streaming Data Logger Models.** Provide a continuous stream of data to a PC or to a ham radio with a TNC modem.



See current conditions at a glance on the instant weather bulletin.



Graph data on a daily, weekly, or yearly basis.



View multiple weather variables at the same time to see their relationships.

Actual screens may vary.

Data logger fits neatly into the back of the Vantage Pro2 console. Or use with Weather Envoy to receive data directly from the outdoor sensors. See page 14.



Sharing Your Weather Data

- **Create Your Own Reports.** Data can be exported to most popular spreadsheets, databases, and word processing programs.
- **Weather Website.** Create your own weather website or post weather conditions to a LAN. Add graphs, text lines, or scrolling ticker tapes, and upload other files (such as webcam images) along with weather data.
- **Weather World 'Round.** Send your URL to news@davis-net.com and we'll add it to our growing list of Davis stations around the world.
- **Citizen Weather Observer Program.** Submit your data to the National Weather Service to help develop improved weather prediction models.
- **The GLOBE Program.** Participate with other schools in an international weather-related program for students from elementary through high school.



Expanded Reporting

- **More Weather Data.** View weather information not available on the console, including heating degree days, cooling degree days, and fuel-oil demand.
- **Optional Sensor Reporting.** With optional UV and solar radiation sensors, get details on sunburn risk and solar energy.
- **Moon Phase.** With Vantage Pro2, you can see the phase of the moon right on the console. But now even Perception and Weather Wizard III owners can view the phases of the moon using WeatherLink.

See the following pages for details on all ten WeatherLink models!

When there's no time to waste. WeatherLink gives you the critical data you need—now!

WeatherLink for Emergency Response Teams with Streaming Data Logger

For use with the free
CAMEO® (Computer-

Aided Management of Emergency Operations) software developed by NOAA and the EPA. With Vantage Pro2 or Weather Envoy, provides the real-time weather data needed to map the footprint of a hazardous plume, predict its dispersion, and help make critical public safety decisions—all at just a fraction of the cost of other systems. For more about CAMEO, visit www.epa.gov/ceppo/cameo.

6550 WeatherLink for Emergency Response Teams \$295

WeatherLink for APRS with Streaming Data Logger

For ham radio operators, including storm chasers and volunteer weather watchers. Connects a Vantage Pro2 console or Weather Envoy to a ham radio with TNC modem for instant transmission of both your location and the local weather conditions via APRS.

6540 WeatherLink for APRS \$195



With his chase vehicle outfitted with a Vantage Pro2, John Van Pelt of StormStudy.com keeps an eye on approaching hurricanes and tornadoes.

WeatherLink for Alarm Output with Connector Block

Now you can turn heaters, fans, and other devices on or off using your weather station. Software walks you quickly and easily through the choices—yet the possibilities are almost unlimited! For each of four outputs, you can enter up to eight different weather parameters. Enter threshold values for each, select from nine different test conditions, and link the entries together as you choose. For example, you could activate a fan to cool your house—but only if the difference between the inside and outside temperatures is more than 5°F, it's more than 72°F inside, and it's between 5:00 p.m. and 6:00 a.m. Our connector block provides the interface between your weather station and an electrical device. For high-power devices, you may also need to add electrical relays (not supplied by Davis).



6544 WeatherLink for Alarm Output \$295

WeatherLink for Irrigation Control with Connector Block

Use your weather station to turn your irrigation system on or off. Connector block connects directly to most irrigation systems including Rain Bird, Rain Master, and Toro. For industrial controllers, provides electronic pulses for wind, rain, and ET. For homeowners, looks at rain and ET values to determine when to inhibit watering. Can also set console alarms to inhibit watering when temperatures are too low or winds are too high. ET monitoring requires solar radiation sensor. Connection to a PC is not required except for initial setup.

6560 WeatherLink for Irrigation Control \$295

Plug-in modules expand WeatherLink's capabilities.



Data from the Vantage Pro station at the Ransom Road Grain Plant in Breckenridge, Michigan is used by farmers for spray record keeping and pest management. Each year, the plant handles enough grain to fill a train 78 miles long.

Agricultural/Turf Management Software Module

Optional software module adds specialized reports for farmers, growers, and turf managers, with user-defined growing season and 24-hour period. You'll get evapotranspiration, chilling requirement, leaf wetness hours, and soil temperature hours—all with user-entered thresholds and starting and ending dates. Plus growing degree-days and temperature-humidity hours (with user-entered names of crops, pests, or diseases) and crop water management (with irrigation values and user-entered K-factor profiles).

6511 Agricultural/Turf Management Module \$95

For use with all WeatherLink models except Mac versions. Some reports require the use of optional sensors. For owners of GroWeather who wish to upgrade to Vantage Pro2, includes the ability to import files from GroWeatherLink.

E-Mail/Phone Alert Software Module

Be alerted whenever conditions approach critical—24 hours a day, 7 days a week. Choose e-mail for detailed information on alarm conditions plus regularly scheduled updates on current weather conditions. Or choose the phone alert, with a special alarm tone telling you to check your weather station console or WeatherLink for details.

6512 E-Mail/Phone Alert Module \$35

For use with all WeatherLink models except Mac versions. Because systems vary, the phone alert may not work outside the USA.



WeatherLinkIP™

Now you can post your weather data directly to the Internet without a PC! Not a web guru? Don't worry—our newest version of

WeatherLink does all the work for you. Simply plug the data logger into the back of your Vantage Pro2 console or Weather Envoy and connect the cable to your cable/DSL router. Within minutes, you'll be able to see your weather data live on the Internet. In addition, WeatherLinkIP lets you:

- Automatically upload data to third-party weather sites including CWOP (Citizen Weather Observer Program), the GLOBE Program, and more.
- Get e-mail alerts of current weather conditions or simple alarm conditions.
- Download the data to your PC for all the same powerful charting, graphing, and analysis as our standard WeatherLink. With Extra User License Kits, you can even download the data independently to multiple PCs—ideal for schools, agriculture, scientific fieldwork, and remote locations.

WeatherLinkIP is "plug-and-play," so it will work straight out of the box without additional configuration in most situations. Simple configuration steps are required to upload to third-party weather sites or set e-mail alert conditions.



6555 WeatherLinkIP \$295

WeatherLink with Standard Data Logger

Our most popular models, for everyone from the home weather buff to the most demanding scientific user.

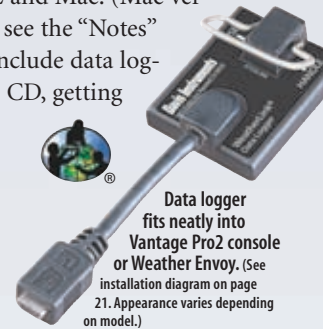
Available in versions for both PC and Mac. (Mac versions do not include all features; see the "Notes" in the chart below.) All models include data logger, download cable, software on CD, getting started guide, and on-line help.

WeatherLink for Vantage Pro2

- 6510USB Windows USB Version \$165
- 6510SER Windows Serial Version \$165
- 6520 Mac OS X Version \$165

WeatherLink for Perception or Wizard

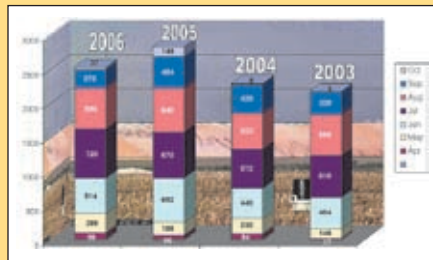
- 7862 Windows Serial Version \$165
- 7855 Mac OS X Version \$165



Data logger fits neatly into Vantage Pro2 console or Weather Envoy. (See installation diagram on page 21. Appearance varies depending on model.)

Use WeatherLink to create your own custom reports.

Mark Sterling of Michigan Agricultural Commodities uses the data collected by WeatherLink to create his own custom growing degree-day reports for corn, soy, and sugar beets. He writes, "Our station data is used by our farmers for spray record keeping and pest management. We have it connected with a broadband wireless Internet link." You can see Mark's reports online at www.midmichiganweather.com/gddreport.htm.



Choose the WeatherLink model that suits your needs.

To get the most out of WeatherLink, choose the model that's right for you. All share the powerful weather data logging and reporting features discussed on page 11, while some add special features designed for specific user groups.

Extra User License Kit includes software on CD and extra user license.

System Requirements	Model	Price	For Use With	Designed For	Data Logger	Notes	Extra User License Kit
Windows, USB Windows 98SE/2000/XP/Vista	6510USB	\$165	Vantage Pro, Vantage Pro2, or Weather Envoy	General Purpose	Standard	For newer PCs with USB connections	6510X \$25
Windows, Serial Windows NT4.0/98/2000/ME/XP/Vista All models with streaming data loggers or connector blocks include all our normal WeatherLink features, plus additional features designed for special purposes. To download one of these models via USB, add our # 8434 USB-to-Serial Cable \$20	6510SER	\$165	Vantage Pro, Vantage Pro2, or Weather Envoy	General Purpose	Standard	For older PCs with serial port connections. Weather website features require Internet Explorer 4 or above.	6510X \$25
	6540	\$195	Vantage Pro, Vantage Pro2, or Weather Envoy	APRS (Ham Radio)	Streaming	Connects to a ham radio with TNC modem.	6510X \$25
	6544	\$295	Vantage Pro, Vantage Pro2, or Weather Envoy	Alarm Output	Standard plus Connector Block	Use to turn heaters, fans, or other devices on or off depending on weather conditions. (For high-power devices, you may also need to add electrical relays.)	6510X \$25
	6550	\$295	Vantage Pro, Vantage Pro2, or Weather Envoy	Emergency Response	Streaming	For use with the free CAMEO software developed by NOAA and the EPA (not included).	6510X \$25
	6560	\$295	Vantage Pro, Vantage Pro2, or Weather Envoy	Irrigation Control	Standard plus Connector Block	Connects directly to irrigation system. Connection to a PC is not required except for initial setup.	6510X \$25
Internet DSL or cable connection and router with free ethernet port.	7862	\$165	Perception or Weather Wizard	General Purpose	Standard	For older PCs with serial port connection. Weather website features require Internet Explorer 4 or above.	7862X \$25
	6555	\$295	Vantage Pro, Vantage Pro2, or Weather Envoy	Internet Updates	Internet-enabled	To view downloaded data on your PC using WeatherLink, you will need Windows 98/2000/ME/XP/Vista.	6510X \$25
Mac Mac OS X v 10.1 or above Intel Mac Compatible	6520	\$165	Vantage Pro, Vantage Pro2, or Weather Envoy	General Purpose	Standard	Does not log data from leaf wetness, soil moisture, solar radiation, or UV sensors. Does not include Citizen Weather Observer or GLOBE capabilities.	6520X \$25
	7855	\$165	Perception or Weather Wizard	General Purpose	Standard	Requires a USB serial adapter. Does not include Citizen Weather Observer, GLOBE, weather forecast, or moon phase features.	7855X \$25

Receive data directly from the outdoor sensors—no console required!

Weather Envoy, when used along with WeatherLink, will collect and store data from the outdoor sensors. Download to your computer at your convenience, then use the WeatherLink software to view current conditions, graph and chart historical data, or even create your own weather web pages.

Weather Envoy™

Weather Envoy includes its own barometer and inside temperature and humidity sensors. Both the wireless and cabled versions include an AC-power adapter. Either may also be run using one of our solar power kits. The wireless model may also be run using three AAA batteries. Expected battery life is four to six months, depending on the logging interval. Batteries should also be added to the cabled model for backup during power outages.

6316 Wireless Weather Envoy \$195
6316C Cabled Weather Envoy \$165

NIST

Requires WeatherLink data logger and software package (not included). See pages 11–13.



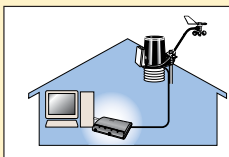
Shown with WeatherLink data logger installed.



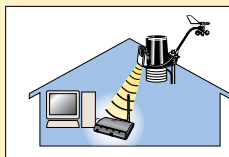
6328 with 24-Hour Fan-Aspirated Radiation Shield

Save up to \$100 by using Weather Envoy instead of a Vantage Pro2 console or console/receiver.

Install wireless or cabled Weather Envoy in your home or office, next to your computer for easy and convenient downloading. For field installation options, see page 21.

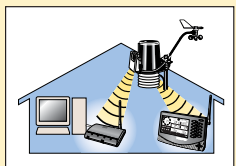


Cabled Home/Office Station

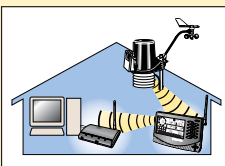


Wireless Home/Office Station

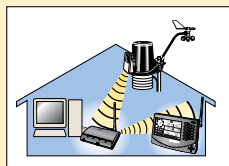
Or use in addition to a wireless Vantage Pro2 console/receiver.



Transmit to both simultaneously



Retransmit data to Weather Envoy



Retransmit from Weather Envoy

A cabled Weather Envoy can be used with ONE of the following:

- Cabled Integrated Sensor Suite, or
- Cabled Integrated Sensor Suite Plus

A wireless Weather Envoy can be used with ALL of the following:

- One wireless Integrated Sensor Suite or Integrated Sensor Suite Plus
- One Anemometer Transmitter Kit
- One Leaf & Soil Moisture/Temperature Station
- Three Temperature Stations or one Temperature Station and two Temperature/Humidity Stations.

Integrated Sensor Suite

For use with Weather Envoy and WeatherLink. Includes all the features of the Vantage Pro2 or Pro2 Plus integrated sensor suites shown on pages 4-5. Mounting pole not included.

NIST

Wireless Integrated Sensor Suite

6322 with Standard Radiation Shield \$325
6323 with 24-Hour Fan-Aspirated Radiation Shield \$550

Cabled Integrated Sensor Suite

6322C with Standard Radiation Shield \$275

Wireless Integrated Sensor Suite Plus

with UV and solar radiation sensors
6327 with Standard Radiation Shield \$725
6328 with 24-Hour Fan-Aspirated Radiation Shield \$950

Cabled Integrated Sensor Suite Plus

with UV and solar radiation sensors
6327C with Standard Radiation Shield \$675

Show your Davis spirit with our exclusive logo wear!

Polo Shirt with Davis Logo

This short-sleeved 100% cotton shirt is oversized and sports the Davis logo on the left chest. Shirt is blue (shade will vary), and logo is embroidered in white. Available in five sizes.

PR700 Polo Shirt with Davis Logo \$40

Specify SM (small), M (medium), L (large), XL (extra large), or XXL (extra extra large).



Printed T-Shirt

Vibrant, 4-color weather images adorn the front and back of this 100% cotton, short-sleeved, white t-shirt. Available in five sizes.

PR701 Printed T-Shirt \$16

Specify SM (small), M (medium), L (large), XL (extra large), or XXL (extra extra large).



Davis Hat

Now you can get your own Davis hat! Baseball-style cap is 100% cotton twill. Two-toned with washed khaki crown, dark-colored brim, and embroidered Davis logo. Self-fabric closure with brass buckle. One size fits all.

PR725 Davis Hat \$12

Remote locations? No problem.

Add a shelter, solar power kit, or telephone modem adapter.

Solar Power Kit for Wireless Vantage Pro2 or Wireless Weather Envoy

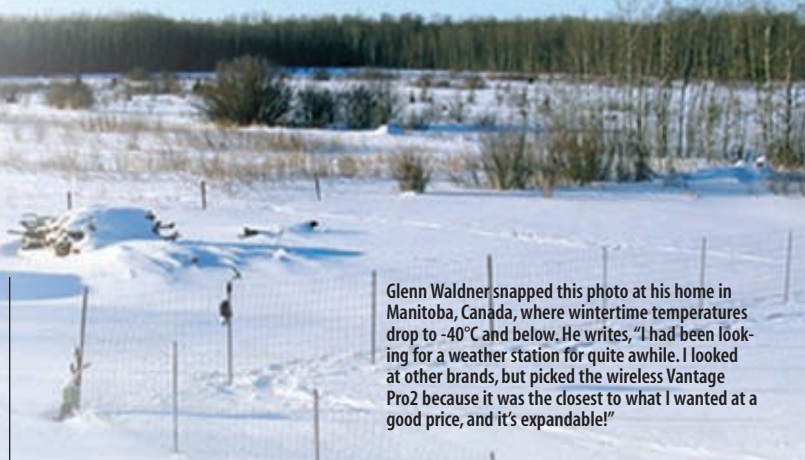
Powers the wireless console/receiver or Weather Envoy. (Outdoor sensors are powered by the solar panel that is included with the station.) Includes solar panel, regulator circuit, rechargeable battery, and 20' (6 m) cable.

6610 Solar Power Kit for Wireless Vantage Pro2 \$175

Solar Power Kit for Cabled Vantage Pro2 or Cabled Weather Envoy

Powers both the console (or Weather Envoy) and the outdoor sensors. Includes solar panel, regulator circuit, rechargeable battery, and 16' (4.9 m) cable.

7707 Solar Power Kit for Cabled Vantage Pro2 \$300



Glenn Waldner snapped this photo at his home in Manitoba, Canada, where wintertime temperatures drop to -40°C and below. He writes, "I had been looking for a weather station for quite awhile. I looked at other brands, but picked the wireless Vantage Pro2 because it was the closest to what I wanted at a good price, and it's expandable!"

Rain Collector Heater



For use in cold climates to measure freezing rain or the moisture content of snowfall. Requires access to AC power; may not be run using a solar power kit. Includes 24-watt, 24-volt heater with thermal cut-off switch, control unit, insulating reflective blanket, and AC-power adapter.

7720 Rain Collector Heater \$175

Includes 50' (15 m) cable. Use Shielded 4-Conductor Extension Cable. Maximum cable length is 120' (36 m).
7895-050 Cable, 50' (15 m) \$25 7895-100 Cable, 100' (30 m) \$48



Warren Rytting of Rytting Farms in Colorado, shown here with his son Zach, writes, "I have been using your Weather Wizard III for years at home, and have enjoyed it greatly. So when I started my own potato farm this year, it was a no-brainer who I was going to trust in the field (literally). I ordered your Vantage Pro2 with a Leaf & Soil Moisture/Temperature station and Weatherlink software. I live 15 miles away from my field, so it's hard to be there every second of the day. The Vantage Pro 2 has helped me with irrigation scheduling and weather forecasting. Thanks for a quality product."

Complete System Shelter

To locate your station console and other components outside, at a field or remote location. Weather-resistant NEMA 4X enclosure provides protection from the elements for the Vantage Pro2 console or console/receiver with WeatherLink data logger. Measures 15½" × 7¾" × 13½" (395 × 195 × 345 mm).

7724 Complete System Shelter \$275



Complete System Shelter with Vantage Pro2 console.

Multi-Purpose Shelter

Use to shelter any of the following sub-systems:

- Weather Envoy with WeatherLink data logger.
- Weather Wizard III console with WeatherLink data logger and junction box.

Measures 3¾" × 9½" × 12½" (95 × 240 × 320 mm).

7728 Multi-Purpose Shelter \$85



Multi-Purpose Shelter with Weather Envoy.

Telephone Modem Adapter



For transmission of data from any of the serial port versions of our WeatherLink data loggers using a modem.

Telephone Modem Adapter

6533 for WeatherLink for Vantage Pro2 \$7
7870 for WeatherLink for Wizard \$7

On the go? Take along a pocket-sized wind speed indicator.

WindScribe™

Ultrasonic wind meter uses patented technology to read current wind speed, highest positive speed (headwind), lowest negative speed (tailwind), 5-second average, and running average. Select from mph, km/h, fpm, m/s, f/s, or knots, plus temperature and wind chill in tenths of °F or °C. Sensitive to breezes as low as 0.4 mph, yet withstands winds as high as 150 mph. Includes replaceable 3-volt lithium battery. Battery lasts up to 600 hours. Dimensions: 5" x 3" x 3/4" (12.7 x 7.6 x 1.9 cm). Weight: 3 1/2 oz (100 grams).

276 WindScribe \$129

Use Three Ways



Handheld with adjustable lanyard.



Tripod mount with 1/4" thread.



Mounting bracket with Velcro® strap.

Wind Wizard™

For instantaneous wind speed readings, where you need them, when you need them. Reads wind speed in miles/hour, meters/second, and Beaufort. Readout dial is supported on sapphire jewel bearings and steadied by a rare-earth magnetic dampening system. Rugged, high-impact plastic with corrosion-resistant components, protective vinyl case, and attached wrist lanyard. Folding handle quickly and securely latches into place. No batteries needed. Dimensions: 3 5/8" x 2 7/8" x 1" (92 x 73 x 25 mm) with handle folded. Weight: 2.5 oz (71 g).

281 Wind Wizard \$49⁹⁹



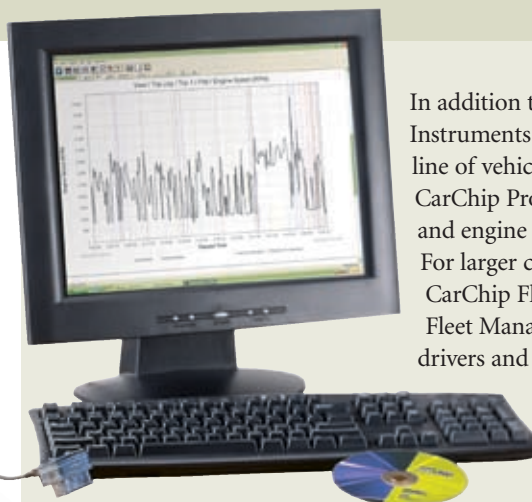
Turbo Meter™

Reads wind speed in miles/hour, knots, feet/minute, or meters/second. Turbine suspended on sapphire jewel bearings responds to the lightest of winds. Three-digit display offers excellent viewing contrast in bright sunlight or at night. Requires three AAA alkaline batteries (not included). Dimensions: 4 5/8" x 2 3/8" x 1 1/8" (118 x 66 x 30 mm). Weight: 3 oz (85 g) not including batteries.

271 Turbo Meter \$165

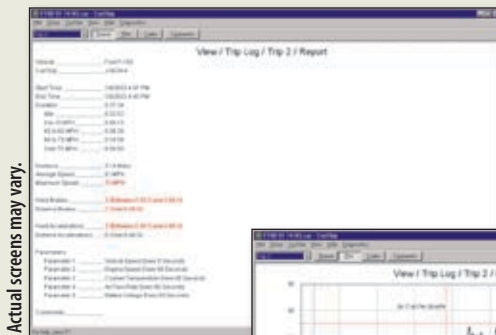


NIST



In addition to weather stations, Davis Instruments also has a complete line of vehicle monitoring systems. CarChip Pro is the all-in-one driving and engine performance monitor. For larger commercial vehicle fleets, CarChip Fleet Pro works with our Fleet Management Software to rank drivers and vehicle performance.

Wireless and GPS accessories are also available. For truck and heavy equipment needs, our DriveRight products are the ideal choice. Call for more info.

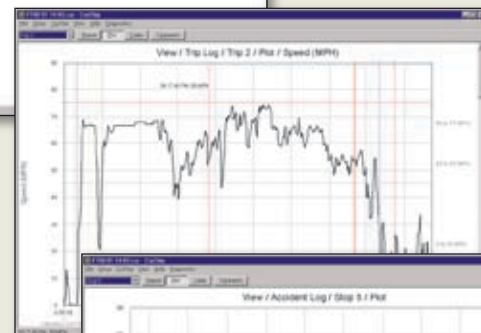


Trip log includes:

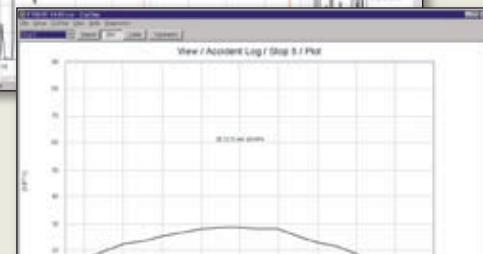
- Time & Date
- Distance
- Average Speed
- Maximum Speed
- Hard Brakings
- Quick Accelerations

Actual screens may vary.

Speed is recorded every second. Hard brakings are highlighted in red, quick accelerations in blue.



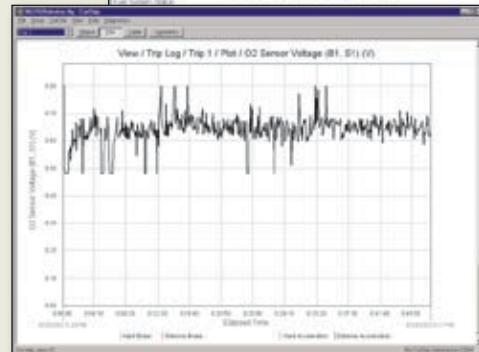
Accident log shows the speed for each of the last 20 seconds before coming to a sudden stop.



Trouble log shows diagnostic trouble code and description plus additional details on engine performance.



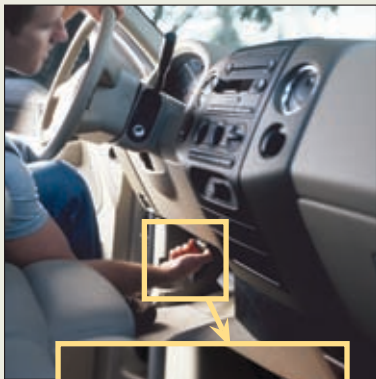
Oxygen sensor voltage is just one of the 23 selectable engine parameters you can choose to monitor.





Think your teen is a safe driver? Don't wait to find out.

Don't wait for a speeding ticket—or worse—to find out how your teen is driving. CarChip plugs instantly into the OBDII (on-board diagnostics) port in your car or truck, where it continuously logs vehicle and driver performance. Download the data to your PC, and you'll get complete details for each trip plus details on engine performance when and if the vehicle's check engine light comes on. Stores up to 300 hours of driving data. Download the data at any time and clear the memory to start again, or let CarChip automatically overwrite the oldest data.



CarChip plugs instantly and unobtrusively into the OBDII port in your car or truck.

Installation couldn't be easier.

- 1. Locate your car's OBDII connector.** You'll find it inside the car, under the driver's side steering column and dashboard.
- 2. Plug the data logger in.** The blinking light tells you it's installed and ready to go.
- 3. Start driving.** CarChip will start collecting data your very next trip. Later, download to your PC for analysis, graphing, and charting.

CarChip is also available in a fleet model with additional reporting capabilities specially designed for fleet managers. For more information, ask for our CarChip or DriveRight catalog.



Wish you could read your car's mind?

By detecting malfunctions early and taking the guesswork out of diagnosing problems, CarChip can help you keep your car in peak running condition. Log any 4 out of 23 possible engine parameters, each of which can affect operation, emissions, and fuel economy. CarChip also has self-setting and audible alarms for speed, hard braking, and quick acceleration.



CarChip® Pro Records 300 hours of trip details:

- Time and date for each trip.
- Distance traveled.
- Speed logged every second.
- Idle time.
- Hard accelerations and decelerations.
- Engine diagnostic trouble codes plus the status of engine parameters at the time the codes occurred.
- Time and date every time CarChip is connected or disconnected.
- Up to 4 out of 23 possible engine parameters, recorded every 5 to 60 seconds. Choose from:

RPM	Battery voltage
Throttle position	Timing advance
Engine load	Coolant temperature
Fuel pressure	Air flow rate
Fuel system status	Intake air temperature
Short-term fuel trim	Intake manifold pressure
Long-term fuel trim	O ₂ sensor output voltage

8226 CarChip Pro \$119

Software lets you:

- Review and clear diagnostic trouble codes.
- View summary and detail reports for each trip.
- Sort business and personal trips.
- Set thresholds for excessive speed, acceleration, and braking.
- View emissions readiness status before your next smog check.
- Enter gasoline purchases and calculate mileage.
- Copy data to spreadsheets and text documents for further analysis.

System requirements:

- Windows 98SE/2000/ME/XP/Vista and USB port.

CarChip can be used with most cars and trucks sold in the USA and Canada, model-years 1996 or later. For a list of excluded vehicles, visit www.carchip.com. Vehicles sold outside the USA and Canada may or may not be compatible.

Options & Accessories

With our options and accessories, you can build your own customized weather station to suit your needs. See the chart on page 21 for the maximum number of wireless stations that can report to a single Vantage Pro2 console/receiver or Weather Envoy.

Wireless

Cabled

A note about original Vantage Pro

Because it uses a different radio, Vantage Pro2 is not compatible with our original Vantage Pro stations. However, WeatherLink and many of our installation options are still compatible. If you have any questions, please contact us or your local distributor for assistance.

Option or Accessory		Wireless							Cabled					Inches	Millimeters	
		6152 Vantage Pro2 \$595	6153 with Fan-Aspirated Rad Shield \$795	6162 Vantage Pro2 Plus \$995	6163 with Fan-Aspirated Rad Shield \$1195	6345 Leaf & Soil Moisture/Temp \$195	6372 Temperature Station \$185	6382 Temperature/Humidity Station \$235	6152C Vantage Pro2 \$495	6162C Vantage Pro2 Plus \$895	7400 Perception II \$150	7425 Weather Wizard III \$195	7425CS Complete Weather Wizard III \$250			
Wireless	6312 Vantage Pro2 Console/Receiver \$295	•	•	•	•	•	•								10 ³ / ₅ × 1 ¹ / ₂ × 6 ¹ / ₅	264 × 38 × 156
	6316 Wireless Weather Envoy \$195	•	•	•	•	•	•								6 ¹ / ₂ × 3 ³ / ₄ × 1 ¹ / ₂	165 × 95 × 38
	6332 Anemometer Transmitter Kit \$170	•	•	•	•										6 ¹ / ₄ × 2 ¹ / ₄ × 7 ³ / ₅	159 × 57 × 200
	7626 Standard Wireless Repeater, AC-Power \$170	•	•	•	•	•	•	•							6 ¹ / ₄ × 2 ¹ / ₄ × 7 ³ / ₅	159 × 57 × 200
	7627 Standard Wireless Repeater, Solar-Power \$220	•	•	•	•	•	•	•							6 ¹ / ₄ × 2 ¹ / ₄ × 7 ³ / ₅	159 × 57 × 200
	7653 Long-Range Repeater, AC-Power \$220	•	•	•	•	•	•	•							6 ¹ / ₄ × 2 ¹ / ₄ × 7 ³ / ₅	159 × 57 × 200
	7654 Long-Range Repeater, Solar-Power \$270	•	•	•	•	•	•	•							6 ¹ / ₄ × 2 ¹ / ₄ × 7 ³ / ₅	159 × 57 × 200
Sensors	6420 Leaf Wetness Sensor \$95					•									4 × 2 ¹ / ₄ × 2 ¹ / ₄	102 × 57 × 57
	7852 Rain Collector II \$75										•				8 ¹ / ₄ × 8 ¹ / ₄ × 9 ¹ / ₂	210 × 210 × 241
	6440 Soil Moisture Sensor \$50					•									3 ³ / ₅ × 1 × 1	86 × 25 × 25
	6450 Solar Radiation Sensor \$160	•	•						•						2 × 2 ³ / ₄ × 2 ¹ / ₄	51 × 70 × 57
	6470 Temperature Probe, Stainless \$40					•									1 ¹ / ₄ × 1 ¹ / ₄ × 2	6 × 6 × 51
	6490 UV Sensor \$350	•	•						•						2 × 2 ³ / ₄ × 2 ¹ / ₄	51 × 70 × 57
Computer Interface	6510 WeatherLink for Vantage Pro2, Windows \$165	•	•	•	•	•	•	•	•						3 ¹ / ₂ × 1 ¹ / ₅ × 3 ¹ / ₄	89 × 29 × 18
	6520 WeatherLink for Vantage Pro2, Mac \$165	•	•	•	•	•	•	•	•						3 ¹ / ₂ × 1 ¹ / ₅ × 3 ¹ / ₄	89 × 29 × 18
	6555 WeatherLinkIP \$295	•	•	•	•	•	•	•	•	•					3 ¹ / ₂ × 1 ¹ / ₅ × 3 ¹ / ₄	89 × 29 × 18
	6540 WeatherLink for APRS \$195	•	•	•	•				•	•					3 ¹ / ₂ × 1 ¹ / ₅ × 3 ¹ / ₄	89 × 29 × 18
	6544 WeatherLink for Alarm Output \$295	•	•	•	•	•	•	•	•	•					3 ¹ / ₂ × 1 ¹ / ₅ × 3 ¹ / ₄	89 × 29 × 18
	6550 WeatherLink for Emergency Response Teams \$295	•	•	•	•				•	•					3 ¹ / ₂ × 1 ¹ / ₅ × 3 ¹ / ₄	89 × 29 × 18
	6560 WeatherLink for Irrigation Control \$295	•	•	•	•	•	•	•	•	•					3 ¹ / ₂ × 1 ¹ / ₅ × 3 ¹ / ₄	89 × 29 × 18
	7862 WeatherLink for Wizard, Windows \$165										•	•	•		4 ¹ / ₂ × 1 ³ / ₄ × 3 ¹ / ₄	114 × 45 × 19
	7855 WeatherLink for Wizard, Mac OS X \$165										•	•	•		4 ¹ / ₂ × 1 ³ / ₄ × 3 ¹ / ₄	114 × 45 × 19
	6533 Telephone Modem Adapter \$7	•	•	•	•	•	•	•	•	•					2 ¹ / ₅ × 1 ³ / ₄ × 2 ¹ / ₃	54 × 45 × 16
7870 Telephone Modem Adapter \$7										•	•	•		2 ¹ / ₅ × 1 ³ / ₄ × 2 ¹ / ₃	54 × 45 × 16	
Power	6610 Solar Power Kit \$175	•	•	•	•										6 ¹ / ₄ × 2 ¹ / ₄ × 7 ³ / ₅	159 × 57 × 200
	7707 Solar Power Kit \$300								•	•					12 ¹ / ₄ × 13 × 6 ¹ / ₅	318 × 320 × 156
Installation & Mounting Options	7716 Mounting Tripod \$65	•	•	•	•	•	•	•	•		•	•			30 × 33 × 52	762 × 838 × 1320
	7717 Mounting Pole Kit \$35	•	•	•	•	•	•	•	•	•		•	•		¹⁵ / ₁₆ diameter × 37 ¹ / ₂	33 diameter × 950
	7714 Radiation Shield \$65					•	•					•	•		7 ¹ / ₂ × 8 ¹ / ₂ × 6	190 × 215 × 152
	7720 Rain Collector Heater \$175	•	•	•	•				•	•		•	•		4 × 2 ¹ / ₄ × 3 ¹ / ₄	102 × 57 × 20
	6673 Sensor Mounting Shelf \$25	•	•						•						2 × 9 × ³ / ₃₂	50 × 228 × 2
	7767 Surge Protector \$16	•	•	•	•				•	•		•	•		1 ¹ / ₂ × 1 ¹ / ₂ × 1 ¹ / ₄	38 × 38 × 32
	7768 Surge Protector Shelter \$24	•	•	•	•				•	•		•	•		3 ¹ / ₂ × 5 ³ / ₄ × 2 ¹ / ₄	88 × 145 × 55
	7724 Complete System Shelter \$275	•	•	•	•				•	•					15 ¹ / ₂ × 7 ³ / ₄ × 13 ¹ / ₂	395 × 197 × 343
	7728 Multi-Purpose Shelter \$85										•	•	•		15 ¹ / ₂ × 7 ³ / ₄ × 13 ¹ / ₂	395 × 197 × 343
	7747 Daytime Fan-Aspirated Radiation Shield \$125	•		•					•	•					9 ⁷ / ₈ × 4 ¹ / ₄	240 × 120

Sensor Accuracy, Resolution, and Range

Function		Vantage Pro2	Perception II	Weather Wizard III	U.S.A. Units			Metric Units <small>Except for rainfall, all variables are measured in U.S. units of measure and rounded to the nearest metric unit shown in the "Resolution" column.</small>		
					Resolution	Range	Accuracy ±	Resolution	Range	Accuracy ±
Agricultural	Evapotranspiration	●			0.01"	Day: to 99.99" Month: to 199.99" Year: to 199.99"	5%	0.1 mm	Day: to 999.9 mm Month: to 1999.9 mm Year: to 1999.9 mm	5%
	Growing Degree-Days	○			0.1 Degree-Day	Unlimited		0.1 Degree-Day	Unlimited	
	Leaf Wetness	●			1	0 to 15	0.5	1	0 to 15	0.5
	Soil Moisture	●			1 cb	0 to 200 cb		1 cb	0 to 200 cb	
Barometric Pressure	Barometric Pressure (Elevation range: -1000' to +15,000'; -300 to +4500 m)	✓	✓		0.01" Hg	26" to 32" Hg	0.03" Hg	0.1 mm Hg	660 to 810 mm Hg	0.8 mm Hg
		✓	✓					0.1 mb	880 to 1080 mb	1.0 mb
		✓						0.1 hPa	880 to 1080 hPa	1.0 hPa
	Three-Hour Trend	✓			Slow ≥ 0.02" Hg Rapid ≥ 0.06" Hg	5-Position Arrow		Slow ≥ 0.5 mm (0.7 mb) Rapid ≥ 1.5 mm (2 mb)	5-Position Arrow	
One-Hour Trend		✓		Change ≥ 0.02" Hg	3-Position Arrow		Change ≥ 0.5 mm (0.7 mb, 0.7 hPa)	3-Position Arrow		
Humidity	Inside Humidity	✓	✓		1%	10% to 90%	5%	1%	10% to 90%	5%
	Outside Humidity	✓			1%	0% to 100%	3%	1%	0% to 100%	3%
	Dew Point	✓			1°F	-105° to +130°F	3°F	1°C	-76° to +54°C	1.5°C
Rainfall	Rainfall	✓			0.01"	Day: 0 to 99.99" Storm: 0 to 99.99" Month: 0 to 199.99" Year: 0 to 199.99"	4%	0.2 mm. (Rounded to 1 mm at 2000 mm and above.)	Day: 0 to 9999 mm Storm: 0 to 9999 mm Month: 0 to 19,999 mm Year: 0 to 19,999 mm	4%
			●		0.01"	Day: 0 to 99.99" Total: 0 to 99.99"	4%	0.2 mm	Day: 0 to 999.8 mm Total: 0 to 9999 mm	4%
	Rate of Rainfall	✓			0.01"	0 to 99.99"/hr	5%	0.1 mm	0 to 1999.9 mm/hr	5%
Solar & UV	Solar Radiation	●			1 W/m ²	0 to 1800 W/m ²	5%	1 W/m ²	0 to 1800 W/m ²	5%
	Solar Energy	○			0.1 Ly	1999.9 Ly	5%	0.1 Ly	1999.9 Ly	5%
	UV Dose	●			0.1 MEDs	0 to 199 MEDs	5%	0.1 MEDs	0 to 199 MEDs	5%
	UV Index	●			0.1	0 to 16	5%	0.1	0 to 16	5%
Temperature	Inside Temperature	✓	✓	✓	0.1°F	32° to 140°F	1°F	0.1°C	0° to 60°C	0.5°C
	Outside Temperature (ISS)	✓		✓	0.1°F	-40° to +150°F	1°F	0.1°C	-40° to +65°C	0.5°C
	Outside Temp (Temp Stn)	●			1°F	-40° to +150°F	1°F	1°C	-40° to +65°C	0.5°C
	Soil or Water Temperature	●			1°F	-40° to +150°F	1°F	1°C	-40° to +65°C	0.5°C
	Outside Temp-Hum Index	✓			1°F	-40° to +135°F	3°F	1°C	-40° to +57°C	1.5°C
	Temp-Hum-Sun-Wind Index	●			1°F	-90° to +135°F	4°F	1°C	-68° to +64°C	2°C
	Wind Chill	✓		✓	1°F	-110° to +130°F	2°F	1°C	-79° to +54°C	1°C
Time/Date	Time	✓	✓	✓	1 minute	12 hours	8 sec/mo	1 minute	24 hours	8 sec/mo
	Date	✓	✓	✓	month/day		8 sec/mo	day/month		8 sec/mo
	Sunrise & Sunset	✓			1 minute			1 minute		
Wind	Wind Direction	✓		✓	1°	0° to 360°	4°	1°	0° to 360°	4°
				✓	10°	0° to 360°	4°	10°	0° to 360°	4°
	Compass Rose	✓		✓	22.5°	16 compass points	4°	22.5°	16 compass points	4°
	Wind Speed	✓		✓	1 mph 1 knot	2 to 150 mph 2 to 130 knots	5%	0.1 m/s 1 km/hr	1 to 67 m/s, 3 to 241 km/hr	5%
	Direction of High Speed	✓			22.5°	16 compass points	4°	22.5°	16 compass points	4°

✓ Included
 ● Optional, shown on console
 ○ Optional, requires WeatherLink. Growing degree-days also requires Ag/Turf Management Module

Unless listed separately, accuracy, resolution, and range are for Vantage Pro2 stations. Specifications for Perception and Wizard may be somewhat different. For complete specifications, visit our website at www.davisnet.com/links.

"Resolution" refers to the number of digits or decimal places displayed on the console. For metric units, this is not the actual unit of measure except for rainfall. Our rain collector measures in true 0.01" or 0.2 mm increments. All other weather variables are measured and accumulated in U.S. units of measure, which are then converted to metric units for display purposes.

Weather Wizard III calculates and displays wind chill according to the original National Weather Service Formula. A new formula was adopted in 2001. For wind chill using this formula, view the data using WeatherLink or choose Vantage Pro2 instead.



Extension Cables

Cable Connections

Standard 4- and 6-conductor cables include waterproof coupler kits for joining two cables together, indoors or out. To join standard 8-conductor cables, use an 8-pin cable coupler (for indoor use only). All cables may also be joined using Surge Protectors.

WeatherLink

The extension cables listed are for the serial port versions of WeatherLink. For USB versions of WeatherLink, add a USB extension cable, available from your local computer supplier. (Not available from Davis Instruments.)

Anemometer

Maximum wind speed reading decreases as length of cable from anemometer to integrated sensor suite (for Vantage Pro2) or console (for Weather Wizard III, including junction box cable) increases. At 140' (42 m), maximum speed is 135 mph (60 m/s). At 240' (73 m), maximum is 100 mph (45 m/s).

7876-008 Standard 4-Conductor, 8' (2.4 m)	\$10
7876-040 Standard 4-Conductor, 40' (12 m)	\$18
7876-100 Standard 4-Conductor, 100' (30 m)	\$40
7876-200 Standard 4-Conductor, 200' (61 m)	\$70
7880-025 Standard 8-Conductor, 25' (7.5 m)	\$15
7880-050 Standard 8-Conductor, 50' (15 m)	\$25
7880-100 Standard 8-Conductor, 100' (30 m)	\$45
7959 Eight-Pin Cable Coupler	\$5
7895-050 Shielded 4-Conductor, 50' (15 m)	\$25
7895-100 Shielded 4-Conductor, 100' (30 m)	\$48

Included Cable Length		Maximum Cable Length	Extension Cable to Use
Vantage Pro2	Wireless Vantage Pro2	40' (12 m)	For anemometer to integrated sensor suite, see note above.
	Cabled Vantage Pro2	40' (12 m)	For anemometer to integrated sensor suite, see note above.
		100' (30 m)	1000' (300 m) from console to integrated sensor suite.
	WeatherLink for Vantage Pro2	8' (2.5 m)	48' (14.6 m) from data logger to serial port. (Serial port versions only.)
	Solar Radiation Sensor	2' (0.6 m)	125' (38 m) from solar radiation sensor to integrated sensor suite.
UV Sensor	2' (0.6 m)	125' (38 m) from UV sensor to integrated sensor suite.	
Wizard	Weather Wizard III	8' (2.4 m)	125' (38 m) from junction box to console.
	WeatherLink for Wizard	8' (2.4 m)	50' (15 m) from data logger to serial port.
	Anemometer	40' (12 m)	See note above.
	Rain Collector	40' (12 m)	900' (270 m) from rain collector to console, including cable from junction box to console.
	Temperature Sensor	25' (7.6 m)	300' (91 m) from sensor to console, including cable from junction box to console.
Rain Collector Heater	50' (15 m)	120' (36 m) from power unit to AC-power adapter. Requires terminal block.	



Anemometers are wind-tunnel tested in our California factory.

NIST-Traceable Sensors

In the USA, the National Institute of Standards & Technology (NIST) develops and maintains the standards of measurement to which all others are ultimately traced. Numerous calibrations, tests, and measurement assurance programs are delivered directly to about 10,000 companies. From these companies, NIST-traceable intermediate service providers are the next link in a network that joins together the makers and users of precision instruments. Davis Instruments is proud to participate in this network. Each of our weather stations is carefully manufactured in our California factory. For those users who require NIST-traceability, certification and recertification of new and previously owned sensors is now available. For a NIST-certified Vantage Pro2 add \$200. Call, fax, or e-mail us for complete details.

Station Dimensions		Inches	Millimeters
Vantage Pro2	Console	10 ¹ / ₂ × 1 ¹ / ₂ × 6 ¹ / ₂	264 × 38 × 156
	LCD Display	6 × 3 ¹ / ₂	150 × 90
	ISS: Anemometer Side	14 ¹ / ₂ × 5 ¹ / ₄ × 17 ¹ / ₂	370 × 130 × 445
	ISS: Rain Collector Side with Standard Radiation Shield	11 × 9 × 13 ¹ / ₂	280 × 230 × 340
	ISS: Rain Collector Side with Fan-Aspirated Radiation Shield	13 × 9 × 20	330 × 230 × 510
	Leaf & Soil Moisture/ Temperature Station	5 × 2 ¹ / ₂ × 7	130 × 60 × 180
	Temperature Station	5 × 2 ¹ / ₂ × 7	130 × 60 × 180
	Temperature/Humidity Station	8 ¹ / ₄ × 7 ¹ / ₄ × 7 ¹ / ₄	210 × 185 × 197
Wizard	Console	5 ¹ / ₄ × 5 ¹ / ₈ × 3	133 × 150 × 76
	LCD Display	4 ¹ / ₄ × 1 ¹ / ₄	108 × 45
	Junction Box	3 ¹ / ₄ × 1 ¹ / ₈ × 7 ¹ / ₈	82 × 48 × 22

Current Draw & Battery Life*	Current Draw in milliamperes		Estimated Backup Battery Life in Days*		80-Amp Car Battery Life at normal temperatures
	lights off	lights on	without data logger	with data logger	
Wireless Vantage Pro2 Console/Receiver	0.9	160	274	274	> 4 years
Cabled Vantage Pro2 Console & Sensors	8	168	27	27	14 months
Perception II	7	127	2.5	1.0	6 to 9 months
Weather Wizard III	6	n/a	3.0	1.5	6 to 9 months

* Actual battery life will vary depending on station setup and usage.

Surge Protector

For upgraded protection against lightning-induced power surges, power-cross conditions, and ground potential rises, use surge protectors with any of our cabled weather stations. See the chart for the number of protectors required for your installation. Stripping of wires is required.

7767 Surge Protector \$16



Surge Protector Shelter

Weather-resistant shelter for surge protectors (sold separately). Houses up to two surge protectors. Measures 3¹/₂" × 5³/₄" × 2¹/₄" (9 × 14.5 × 5.5 cm).

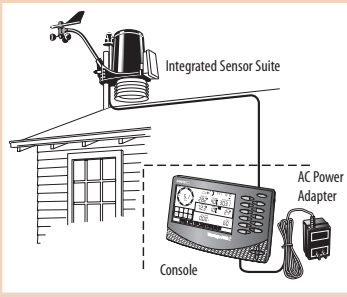
7768 Surge Protector Shelter \$24



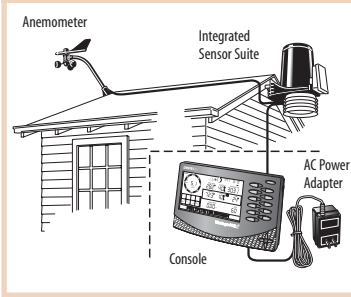
Number of Surge Protectors Required

Weather Station	Cable Run	Number of Surge Protectors
Vantage Pro2 or Pro2 Plus	Anemometer to Integrated sensor suite	2
	Integrated sensor suite to console	2
Weather Wizard III	Temperature sensor to junction box	1
	Rain collector to junction box	1
	Anemometer to junction box	2
	Junction box to console	4

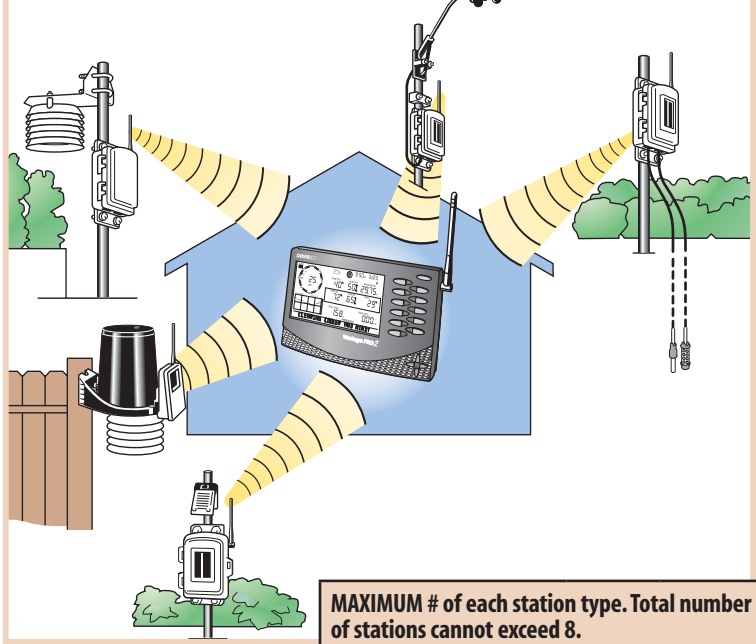
Cabled Vantage Pro2 Plus



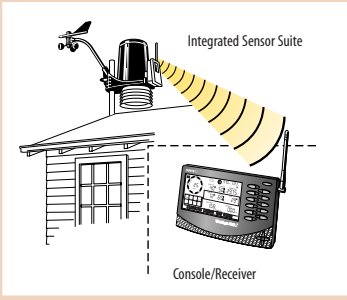
Remote Anemometer



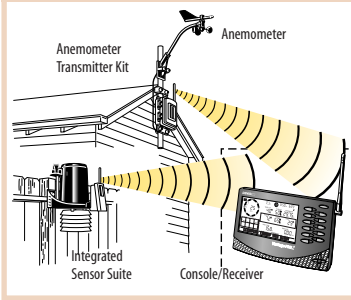
Each Vantage Pro2 console/receiver can receive data from up to eight different transmitting stations.



Wireless Vantage Pro2



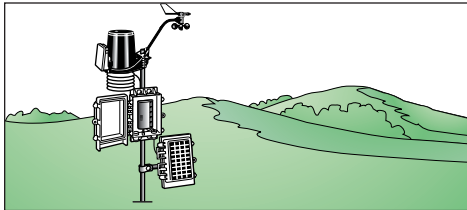
Anemometer Transmitter Kit



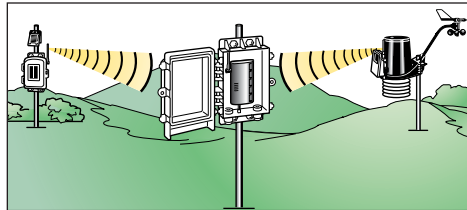
MAXIMUM # of each station type. Total number of stations cannot exceed 8.

Transmitting Station	Shown on Console	Logged by WeatherLink
Integrated Sensor Suite	1	1
Anemometer Transmitter Kit	1	1
Leaf & Soil Moisture/Temperature	2*	2*
Temperature Station	8	3**
Temperature/Humidity Station	8	2**

Weather Envoy with a wireless or cabled field station



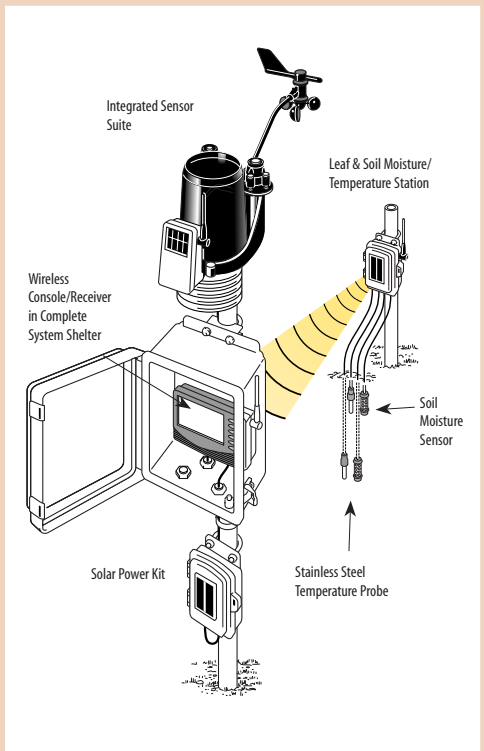
Cabled Field Station. With Multi-Purpose Shelter and 7707 Solar Power Kit.



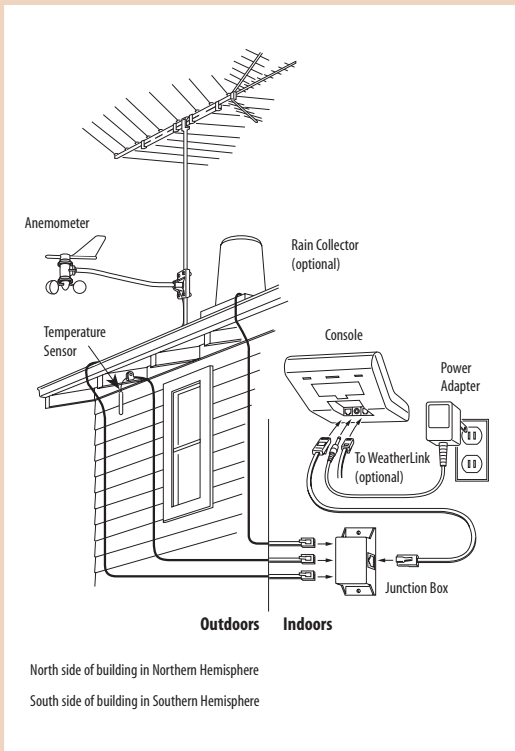
Wireless Field Station. Run on batteries or add our 6610 Solar Power Kit.

* One fully-populated station or two partially-populated stations; see page 6.
 ** WeatherLink will log a maximum of 3 Temperature Stations or 1 Temperature Station and 2 Temperature/Humidity Stations.

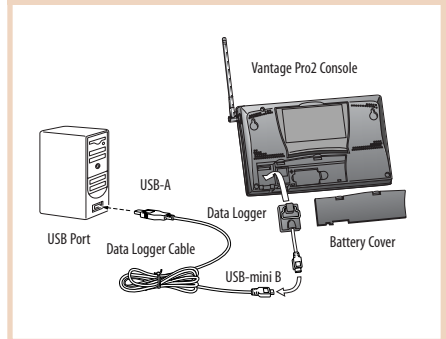
Field Station with Solar Power and Soil Moisture



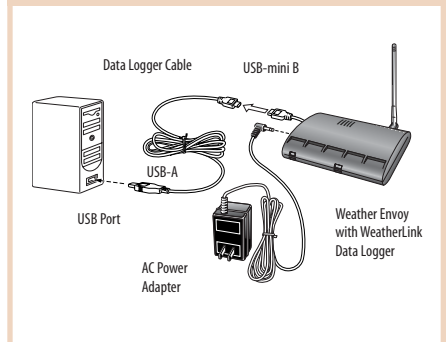
Weather Wizard III Installation



WeatherLink for Vantage Pro2



Wireless Weather Envoy



Things to consider when purchasing an electronic weather station.

1. What weather variables are measured and recorded?

Most other stations offer barometric pressure, outside humidity and dew point, daily and yearly rainfall, wind speed and direction, wind chill, and outside temperature. Some also offer inside temperature and humidity, and a few even give you extra outside temperatures and rain rate. Only Vantage Pro2 gives you all these, plus:

- Additional Rainfall Information: 15-minute, hourly, and monthly rainfall, and rainfall amounts for each of the last 24 storms.
- Additional Wind Speed Information: 10-minute average speed, direction of high speed, and 10-minute dominant wind direction.
- Apparent Temperature: Heat index and, with a solar radiation sensor, temperature-humidity-sun-wind index.
- Optional Solar and UV Radiation Sensors for greater awareness of the dangers of excessive exposure to the sun.
- For agricultural users, optional evapotranspiration, leaf wetness, soil moisture, and soil temperature.

2. How easy is it to set up?

With most competing stations, you need to install each sensor separately, which adds complication and takes time and effort. Vantage Pro2 is factory-assembled to make setup as easy as possible. Just complete a few minor assembly steps, insert the battery, and you're ready to mount the sensor suite. Mount the two sides together using our optional tripod, or detach the anemometer to mount it separately. Flexible mounting options make it easy, either way.

3. What is the maximum transmission distance?

The wireless transmission range for most competing stations is generally quite limited. Although range is highly variable (depending not only on the physical features of the land and structure but also on RF interference in the area), Vantage Pro2 will almost always outperform the competition. And we offer wireless repeaters should you wish to extend the range even further.

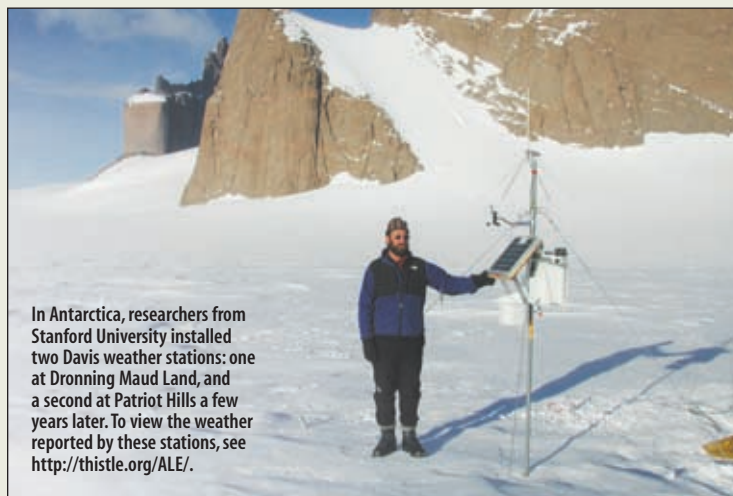
4. How many highs and lows are measured and recorded?

Most other stations simply give you the current readings. If highs and lows are available at all, they are usually quite limited. Only Vantage Pro2 gives you the highs and lows (and/or totals or averages) for just about all weather conditions, with time and/or date for the last 24 days, months, or years. No other station on

the market even comes close. And not only can you view the data numerically, you can also view on-screen graphs, for instant visual representations of long-term trends.

5. How often is the information updated?

The Vantage Pro2 transmitter sends data to the console every 2½ seconds. Highly variable conditions (such as wind speed and direction) are updated with each packet, while less variable conditions are updated every 10 seconds. With competing stations, the update interval is much longer: 30 seconds, or even up to 3 minutes. This may not seem important. But try watching the wind gust, or the rain suddenly



In Antarctica, researchers from Stanford University installed two Davis weather stations: one at Dronning Maud Land, and a second at Patriot Hills a few years later. To view the weather reported by these stations, see <http://thistle.org/ALE/>.

come pouring down. It's very disconcerting to look out the window, see something happen weather-wise, and not see it reflected on the console right away.

6. How is the forecast generated?

The competition generally bases their forecast on barometric pressure alone, which results in none too accurate a prediction. Vantage Pro2 uses a sophisticated forecasting algorithm which takes into account not only barometric pressure, but also wind, rainfall, temperature, humidity, and longitude and latitude. The result? A much more accurate forecast. Not perfect, but even the guys with the satellite pictures don't always get it right!

7. How is the forecast displayed?

Competing stations use icons to show the forecast. Vantage Pro2 has similar icons, plus over 80 different forecast messages that scroll across the bottom of the display. None of the other stations have this. The ticker tape also gives

additional information depending on which key you press. Press WIND to display wind speed, and you'll get a message showing the 10 minute average wind speed. If it's raining, press RAIN YR to see the last 15 minutes of rain, or RAIN DAY to see the last 24 hours of rain. And these are just a few examples! None of the competing stations have anything like this.

8. How much data can you graph on the screen?

With Vantage Pro2, you can graph just about every weather variable, with averages and highs and lows for most, and go back in time for minutes, days, months, and years. The competition typically graphs just one vari-

able—barometric pressure—and typically just for the last 24 hours. With all the graphs on Vantage Pro2, you can do tons of analysis, even without purchasing a software package. You'll find that the more dramatic the weather is, the more fun it is to look at the graphs. Just how windy is it, and how does it compare to the last wind storm? How much rain did we get this month, as compared to last month?

9. Can you use the station at higher elevations?

Our stations can be used up to 15,000 feet in elevation. Many competing stations are limited to 6,000 feet or below. If you're lucky enough to live and work—or perhaps enjoy a vacation home—in the mountains, you'll find that our Vantage Pro2 weather station works just fine, no matter what the elevation.

10. Is there a computer interface?

If you'd like to do even more analysis, add our WeatherLink data logger and software

package. The data logger stores data at the interval you choose (from one minute to two hours) for up to six months. Transfer the data whenever you like, or leave your computer on to have it transfer automatically every day. For some competing stations, no software package is available. Other stations do offer software, but don't include a data logger—so your PC must be on and the software running at all times.

11. How many alarms are there?

With Vantage Pro2, alarms can be set for just about every weather variable, for just about any reason imaginable—up to 70 alarms in all. The alarms found on competing stations are generally quite limited.

12. What is the accuracy, resolution, and range?

Vantage Pro2 generally beats the competition in accuracy, resolution, and range. It can be difficult to find the specs for competing stations. When we do find them, our testing shows that they are a bit, shall we say, optimistic. We are proud to publish our specs in our catalog and on our website, and stand behind them 100%.

13. How many people are using the stations?

There are many, many thousands of happy Davis weather station users around the country and around the world. Check out "Weather World 'Round" on our website (www.davisnet.com/links), and you'll see a listing for Norman, Oklahoma. Click on the link, and you'll go to the website for the National Weather Service's Storm Prediction Center. They're using our Weather Monitor II to update the local "unofficial" weather conditions to their website. Many other Davis weather station owners participate as volunteer observers for the National Weather Service, the National Hurricane Center, and numerous local TV and radio stations.

14. How long has the company been in business?

In business since 1963, Davis Instruments opened up the home weather station market back in 1989. Our weather stations are manufactured right here in Hayward, California, and we have a full customer service and support staff. Most competing stations are made overseas, and it can be difficult (if not impossible) to get any kind of customer service or aftermarket support.

With Vantage Pro2, you get highs and lows (and/or totals or averages) for just about all weather conditions with time and/or date for the last 24 days, months, or years.	BAR		HUMIDITY			RAIN			TEMPERATURE				WIND			WITH OPTIONAL SENSORS											
	Barometric Pressure	1 min	1 min	50 sec	10 sec	10 sec	10 sec	10 sec	1 min	10 sec	10 sec	10 sec	10 sec	2½ sec	2½ sec	2½ sec	1 hour	50 sec	15 sec	60 sec	50 sec	10 sec	10 sec	50 sec	50 sec		
Update Interval *	1 min	1 min	50 sec	10 sec	10 sec	10 sec	10 sec	1 min	10 sec	10 sec	10 sec	10 sec	2½ sec	2½ sec	2½ sec	1 hour	50 sec	15 sec	60 sec	50 sec	10 sec	10 sec	50 sec	50 sec			
CONSOLE DISPLAYS																											
Reading at end of update interval	•	•	•	•					•	•	•	•		•				•	•	•	•	•	•	•	•	•	
Total amount for the interval					•	•											•								•		
Average reading for the interval													•														
High reading for the interval								•																			
SET ALARMS for																											
Special Alarms	①				②	③							④			⑤										⑥	
High Reading		•	•	•				•	•	•	•		•				•	•	•	•	•	•	•	•	•	•	
Low Reading		•	•	•					•	•		•					•	•	•		•						
DISPLAYED but not graphed																											
Current Year High	•	•	•	•					•	•							•	•	•		•						
Current Year Low	•	•	•	•					•			•					•	•	•		•						
GRAPHED & DISPLAYED for last 24 of each of the following																											
EOP	End-of-15-Minute Period Readings	•																									
	End-of-Hour Period Readings	•	•	•	•					•	•	•						•	•				•				
TOTALS	15-minute Period Totals					•																					
	Hourly Totals					•											•								•		
	Daily Totals					•											•								•		
	Monthly Totals					•											•										
	Storm Totals (with start & end date)						•																				
	Yearly Totals					•											•										
AVERAGES	10-Minute Averages												•														
	Hourly Averages or Dominant												•	•					•						•		
	Daily Averages or Dominant													•	•												
	Monthly Averages or Dominant														•	•											
	Yearly Averages															•											
HIGHS	One-Minute Highs							•																			
	Hourly Highs							•					•														
	Daily Highs	•	•	•	•			•	•	•	•		•				•	•	•		•	•	•	•	•	•	
	Monthly Highs	•	•	•	•			•	•	•	•		•				•	•	•		•	•	•	•	•	•	
	Yearly Highs							•		•			•				•										
LOWS	Hourly Lows											•															
	Daily Lows	•	•	•	•				•	•		•					•	•									
	Monthly Lows	•	•	•	•				•	•		•					•	•									
	Yearly Low									•																	

* Update interval may vary depending on station ID and type of station.

SPECIAL ALARMS

- ① Storm Warning: Amount of barometric pressure fall. Storm Clearing: Amount of barometric pressure rise.
- ② Flash Flood Warning: 15-minute rainfall amount. 24-Hour Rain Alarm: 24-hour rainfall amount.
- ③ Rainstorm Alarm: Rainfall amount for current storm.
- ④ 10-Minute Average Wind Speed Alarm
- ⑤ Daily Evapotranspiration Amount Alarm
- ⑥ Daily UV Dose Alarm

Warranty

We warrant our products to be free of defects in material and workmanship for one year from date of original purchase. While we make every effort to carefully manufacture our products to the highest standards of quality, occasionally parts may be found to be missing, defective, or damaged. If you have a defective part, return the product to us, shipping charges prepaid. Include proof of purchase and a written explanation of the trouble. During the warranty period, we will, at our option, either repair or replace the product free of charge. This warranty does not cover damage due to improper installation or use, lightning, negligence, accident, or unauthorized service, or to incidental or consequential damages beyond the Davis products themselves. Implied warranties are limited in duration to the life of this limited warranty. Some states do not allow limitations on how long an implied warranty lasts, or the exclusion or limitation of incidental and consequential damages, so the above limitation may not apply to you. This warranty gives you specific legal rights. You may have other rights, which vary from state to state or country to country.

Details, specifications, and prices are subject to change at any time without notice.



Weather Forecasting Card

Discusses the use of wind direction, barometric pressure, and cloud type in predicting the weather. Includes full list of radio weather stations for official broadcasts, plus key information on storm warnings, hurricane avoidance, navigating in fog and other hazardous conditions, and more. Weatherproof high-strength plastic, full color both sides. Punched for binder or bulkhead mounting. Dimensions: 8½" x 11" (216 x 279 mm).

131 Weather Forecasting Card \$9⁹⁹

30-Day Money-Back Guarantee

If for any reason you are unsatisfied with anything purchased from us, return it within 30 days and we will gladly refund your purchase price. Shipping charges are not refundable. This guarantee does not apply to opened software packages.

Vantage PRO2™

- **Transmits weather data wirelessly up to 1000'**— that's over 3 times the distance of competing stations!
- **Now transmit even farther— for miles on end—** with our long-range repeaters. See page 9.
- **Post weather data directly to the Internet without a PC!** See page 13.

- **Barometric Pressure.** Currently and for each of the last 24 hours. Five-position trend arrow shows whether pressure is rising, falling, or stable.
- **Temperature.** Inside and outside temperature, currently and for each of the last 24 hours. High and low temperature alarms.
- **Humidity.** Inside and outside humidity, currently and for each of the last 24 hours. High and low humidity alarms.
- **Rain.** Rainfall for the last 15 minutes and the last 24 hours, days, months, and years. Flash flood and 24-hour rain alarms.
- **Rain Rate.** Currently and for each of the last 24 minutes. Rain rate alarm.
- **Rain Storm.** Rainfall for the last 24 storms, with beginning and ending dates for each storm. Rain storm warning and alarm.
- **Wind Speed.** Current wind speed. Average for the last ten minutes and each of the last 24 hours. High and average wind speed alarms.
- **Wind Direction.** Currently and for the last 24 hours, days, and months. Direction of high wind speed.
- **Wind Chill.** Current wind chill. Wind chill alarm.
- **Dew Point.** Currently and for each of the last 24 hours. High and low dew point alarms.
- **Heat Index.** Currently and for each of the last 24 hours. Heat index alarm.
- **Sunrise & Sunset.** Time of sunrise and sunset at your location—it even takes daylight savings time into account!
- **Highs & Lows.** For most weather variables, with time and/or date, for each of the last 24 hours, days, months, and years.
- **Optional Sensors.** For UV and solar radiation, evapotranspiration, soil moisture, and more.
- **On-screen graphing.** Graph current conditions, averages, or highs and lows for the last 24 hours, days, months, or years.
- **Your own local forecast.** Forecast icons show sun, part sun, clouds and rain, or snow. Check the scrolling ticker-tape for more details.

**All this—and much more—
in a station that's easy to
set up and fun to use.**



Davis
Davis Instruments

3465 Diablo Avenue, Hayward, CA 94545-2778

FORWARDING SERVICE REQUESTED

To Request a Catalog



Our **Weather Catalog** offers a comprehensive line of precision weather instruments for home, school, business, and agriculture, in both wireless and cabled models.



In our **Marine Catalog**, you'll find gear for sailboats, motorboats, water sports, RVs, and more—over 200 unique items, from navigational equipment to boating accessories.



The all-in-one driving and auto performance monitor is ideal for parents of teens drivers, auto enthusiasts, or owners of businesses who want to manage their work and commercial vehicles. GPS and wireless options available on fleet model.



DriveRight[®] vehicle monitoring systems include on-board LCD consoles with audible alarms for instant feedback, GPS capability, and software for use by fleet managers.

Please send me the catalogs checked below:

- Weather *Name* _____
- Marine *Address* _____
- CarChip
- DriveRight *City* _____ *State* _____ *Zip* _____

Please send catalogs to the people I've listed below:

- Weather *Name* _____
- Marine *Address* _____
- CarChip
- DriveRight *City* _____ *State* _____ *Zip* _____

- Weather *Name* _____
- Marine *Address* _____
- CarChip
- DriveRight *City* _____ *State* _____ *Zip* _____

To Place an Order

Representatives Are Available

Monday through Friday, 7:00 a.m. to 5:30 p.m. Pacific Time.
Or use our fax or e-mail any time, day or night.

(800) 678-3669	Toll-Free Order Line
(510) 732-9229	For callers outside USA and Canada
(510) 732-7814	Technical Support Line
(510) 670-0589	Fax
sales@davisnet.com	E-mail to Customer Service
support@davisnet.com	E-mail to Technical Support
info@davisnet.com	General e-mail

To Order by Telephone, Fax, or via the Internet

For fastest service, call toll-free, fax your order, or order on-line. On telephone orders, be sure to fill out the Order Form and have your Visa or MasterCard ready before you call. Your transaction will go more quickly, and you'll have a record for your files. On fax orders, please print legibly and be sure to include all credit card information (account number, expiration date, and signature). To order on-line, go to **www.davisnet.com**. Click on the "Order Item" icon found at the bottom of each product page.

To Order by Mail

Fill out the Order Form clearly and completely. Be sure to include your Visa or MasterCard number, expiration date, and signature, or enclose your check or money order made payable to Davis Instruments. Do not send cash. Mail to:

Davis Instruments, 3465 Diablo Ave., Hayward, CA 94545

Delivery

Items in stock are normally shipped within 48 hours of receipt of order. We will advise you of any delay in shipping of 30 days or more. Please be sure to inspect the shipment upon arrival. Report any losses or damages to us at once. Be sure to save all components and packaging until the claim is settled.

Prices

Prices on this order blank are effective December 1, 2007. Details, specifications, and prices are subject to change at any time without notice.

Questions? Call Customer Service

If you have any questions about our products or your order, please give us a call. We'll be glad to help. Most questions can be answered while you're on the phone.

Continental USA, Hawaii, Alaska & Puerto Rico

Orders to the continental USA, Hawaii, Alaska and Puerto Rico are shipped via UPS Surface unless you specify otherwise. Be sure to include a complete street address. UPS will not deliver to a P.O. box.

If using a rural route number, please provide a complete address and nearest crossroad. If UPS does not deliver to your area, we will ship via surface parcel post unless you specify otherwise.

Allow 7-10 working days for delivery after shipment of your order. UPS 3-day delivery is not available to Hawaii, Alaska and Puerto Rico, but is available in the continental USA.

Canada

Orders to Canada are shipped via US Mail (Air Parcel Post) unless you specify otherwise. Please call or write for quote on other shipping methods.

International Orders

We have distributors in many countries throughout the world. Please call or write for the name and address of the distributor in your country. If there is no distributor in your country, you may order directly from us. Please call or write for shipping quote. Payment may be made by Visa, or MasterCard, or by check or money order in U.S. dollars drawn on a U.S. bank. Add \$20.00 processing fee for wire transfer. Do not send cash. Overseas delivery via surface carrier may take 8-10 weeks or more. Orders using Visa, or MasterCard must be issued by a US bank or a wire transfer is required for payment. Contact us for wire transfer details.

Shipping & Handling Charges					
Merchandise Total	USA				Canada
	Surface	3-Day	2-Day	Next Day	APP
Up to \$49.99	9.00	16.00	22.00	33.00	18.00
\$50 - 99.99	10.00	19.00	28.00	39.00	20.00
\$100 - 149.99	11.00	22.00	33.00	44.00	22.00
\$150 - 399.99	17.00	28.00	44.00	61.00	33.00
\$400 - 999.99	22.00	33.00	61.00	83.00	44.00
\$1000 - 1999.99	38.00	72.00	95.00	110.00	66.00
\$2000 - 3999.99	55.00	110.00	145.00	175.00	88.00

Orders \$4000 or more or to overseas destinations: please call or write for quote.