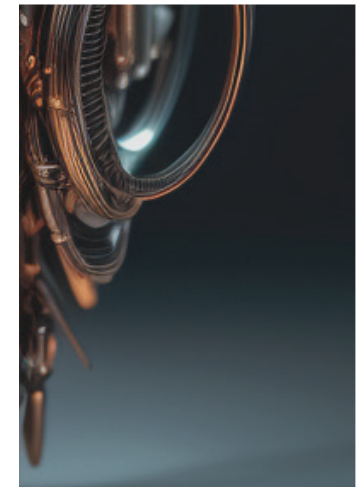
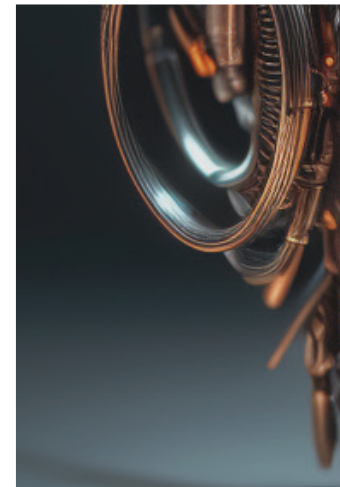
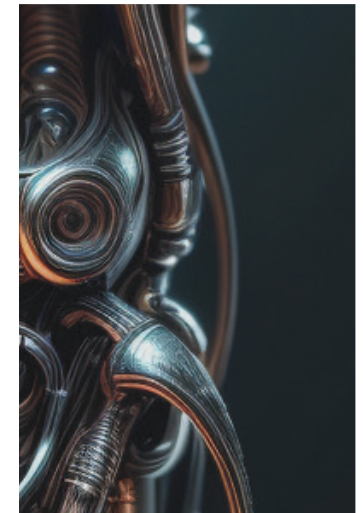
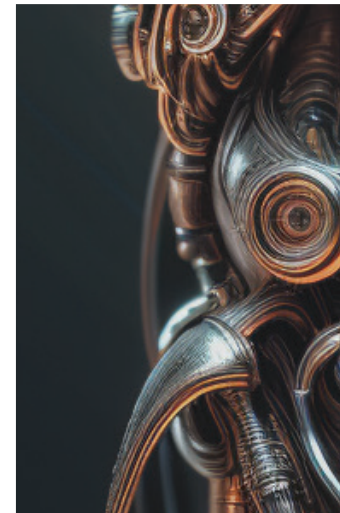
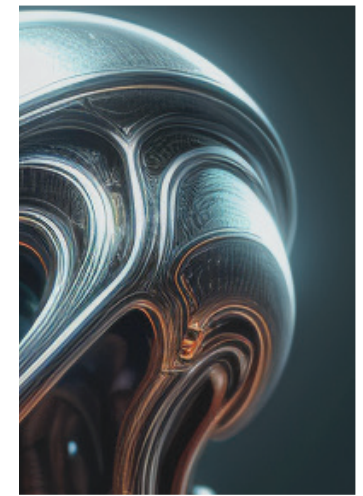
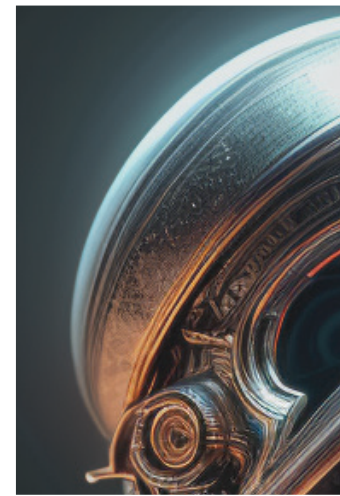


SOCIAL
CHANNEL MAGAZINE
2023
SUMMER EDITION

www.faber-sum.ch





SUMMER EDITION 2023 - Order in Chaos

Welcome dear reader, this is the second AI resume of my AI-Laboratory. Lot of things happened as AI tools evolve so quickly this year. Automation is now a common process in all image-based industries and web-services for all kind of productions can be found on the internet. My own approach goes a bit in a different direction, because still I focus on the development of AI as a tool rather than an app to render sellable products only.

As an traditional artist, it's a great challenge to build up own automation 'recipies' in order to use them in one's own production pipeline. AI for me has become a powerful assistant to extend my creative possibilities: e.g. autocompleting loose sketches, compiling hand-drawn images into detailed renderings, resampling edited images into code-made 'artworks' and a lot more...



All the new 'AI trickeries' developed this year are in fact a novum. It changes the way how image generation and studio productions are considered in the present. The transition is actually not finished, but in the long run, it is visible where and what for AI will be used and replace some traditional work and open new ways of creativity to a broad community. For individuals like me, AI is already very profitable for researches, concept and design works, composition studies and for sales.

In this resume I showcase a few technical and practical topics, due to the demand of unveiling a bit of my own workflows and what I consider important to know about using AI efficiently. As for now, the journey has just began and there is still a lot to discover - so here we are, enjoy the summer edition 2023!

YES, STABLE DIFFUSION IS SIMPLE TO USE... sort of:

People often ask me why i use Stable Diffusion (SD) locally, instead of generating images online... well, it's a proprietary matter: you don't own anything and can't control anything on the web. simple! Also, lot of these emerging web services use a software called Automatic1111 in the background to make all the AI work for its users. In my opinion, using Automatic1111 and all the necessary extensions locally on my computer is faster, more responsive and also more complex. You can start using it in a simple manner - but if you want to go down the rabbit-hole, then you can... and it's a hell of a ride. Let me explain:

First of course, you can break the software and make it unusable very fast, second it can 'burn' your results, if you don't take care... Yes, it gets easily out of control once you dive deeper and that's just the beginning. Using SD has to be learned in iterations - you can't rely on prompting only, when you have that much control that Automatic1111 offers you as a desktop-application. Here are a few features to show what makes it different from online services:

- prompt sequences can invoke additional networks
- network structures can be constructed manually
- sampling/rendering settings are pretty complex
- image influences can be injected into additional models
- custom made models can either be created or merged
- all generation features are editable by nature
- endless sampling/rendering productions @ no costs
- free extensions/models provided by a large community

Resources used for a setup locally can be found easily on the internet for free; everything is open-source and there are large communities sharing knowledge and software extensions. Here are the 3 most notable ones:

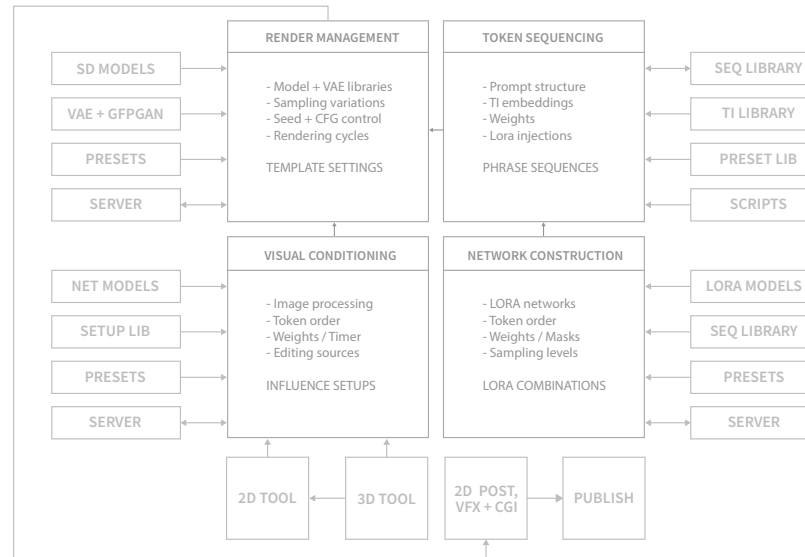
- <https://github.com/AUTOMATIC1111/stable-diffusion-webui/>
- <https://huggingface.co>
- <https://civitai.com>



TOY OR TOOL - you decide what AI is:

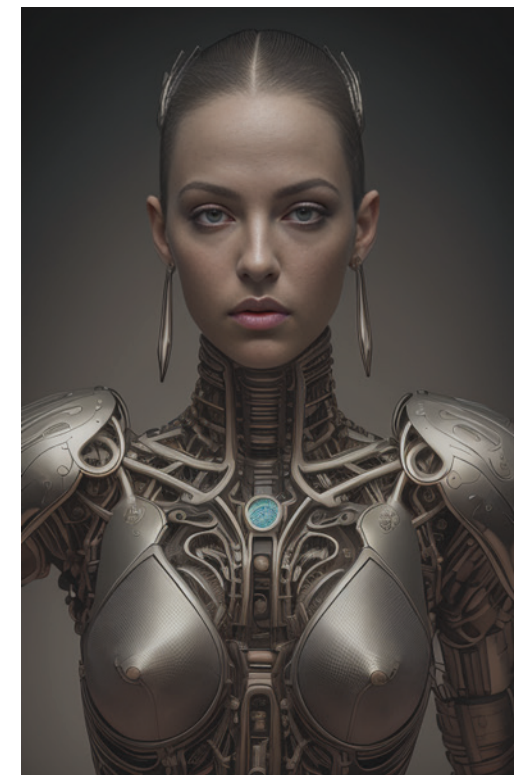
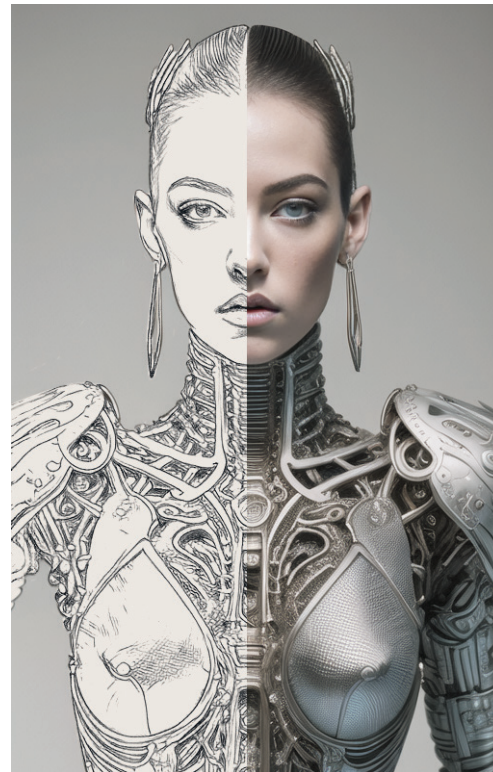
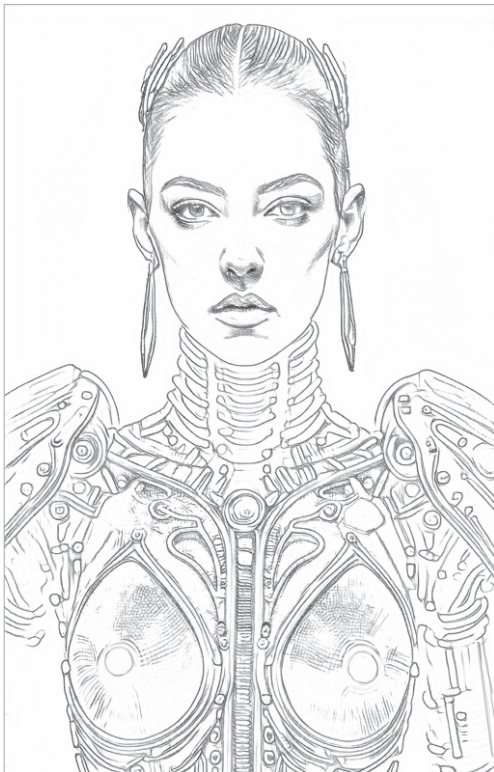
AI services offer a great playground for a wide range of users. Just like any application whether you're an amateur or a power user, generating images is for both the same. The main difference here is, that if you may intend to make specific renderings you have to organize yourself, make a lot of preparations and gather everything you need for your production pipeline your own way.

I created a simple schematic overview of what I consider reasonable to cultivate and to maintain in order to have an efficient workbench and for developing proper workflows in Automatic1111.



Simply said, organising yourself is helpful to build up a production pipeline for all various purposes. It really doesn't matter what type of imagery you want create - all you need is to use the right combination of the given tools and feeding the AI network with precise data.

Since manual and automated image sampling has become available, it is quite clear what AI-automation is now able to solve: it interpretes guidances through image-inputs and stabilises its generation process. In other words, images influence image creation... without any limits!





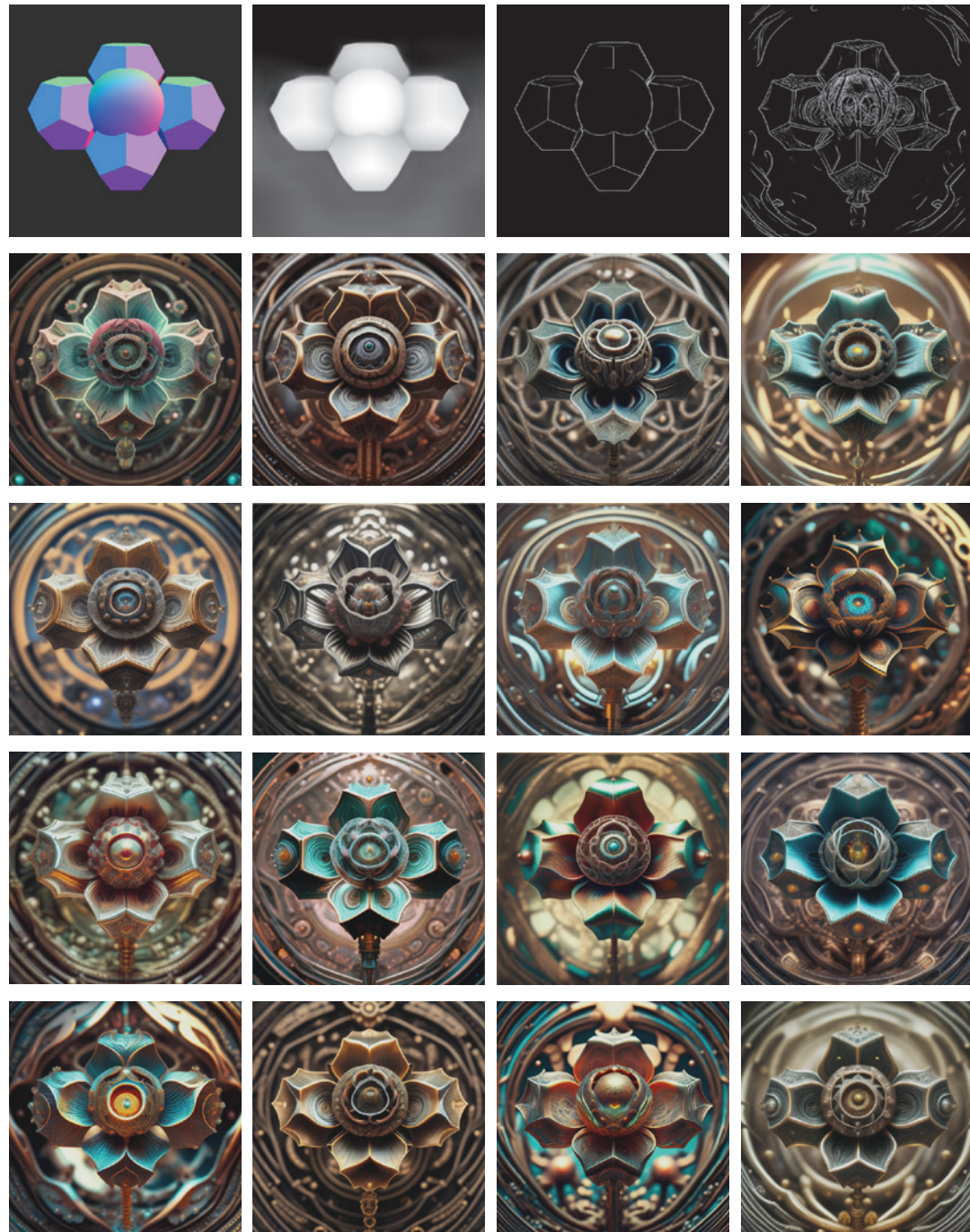
BE CREATIVE, USE AI.. and get used to it:

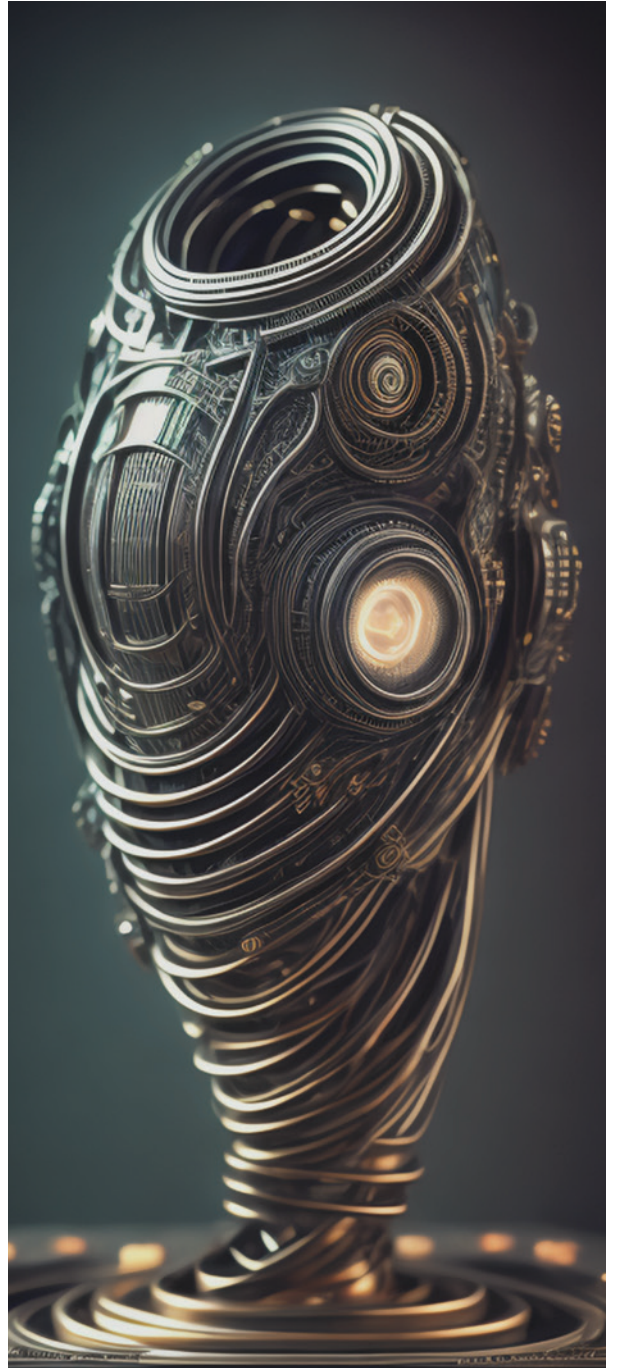
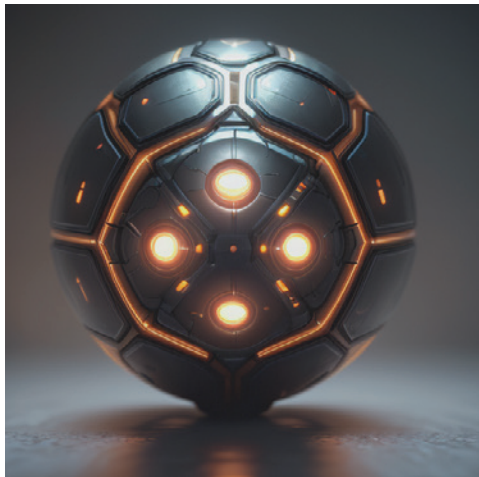
Beside the technical aspects, working with an image generator as a tool for artistic purposes can still be challenging; first you need to develop tactics and gather own libraries in order to generate images efficiently. It's simple to make generic pictures or trendy results, but creating your own stuff is another story. Let's see why:

If you have already used a web-service like midjourney, dall-e, leonardo.ai or similar image-generation portals, you know how 'simple' it is to generate images, right? On these sites you have active communities, prompts you can copy and predefined settings you can follow without 'any' risks of failures - but this is far beyond the reality of AI: it's like comparing a train on rails with an offroad sportscar -> web-services follow predetermined setups that work, on the other hand learning and using opensource apps the right way is time consuming and instant rewards don't come easily, but they come - don't get me wrong. With Automatic1111 you can get the best out of SD (Stable Diffusion) for your own purposes!

What makes using Automatic1111 great, is that you can generate variations and similar iterations of your renders. e.g.: if the subject in the picture is fixed, it is easily possible to change its whole appearance. AI is a very powerful tool for developments and artistic researches. You can sketch out ideas manually, feed it to AI and create what you want!

So what's next - I think hunting fresh 'recipies' for AI - automated styling will redefine my artworks, because exploring both, technical and artistic features makes it possible for me to get fresh impulses.... stay tuned!









SOCIAL
CHANNEL MAGAZINE
2023
SUMMER EDITION

WWW.FABER-SUM.CH