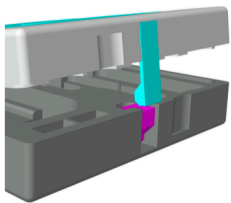
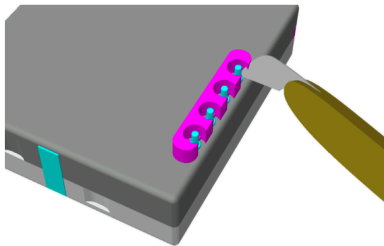


pull to open  
the box

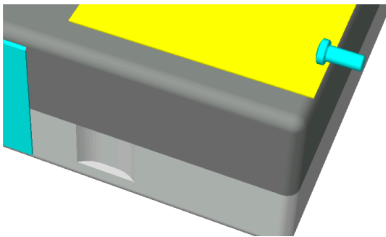


pick and savour one of the steps on the following pages, then write down the date

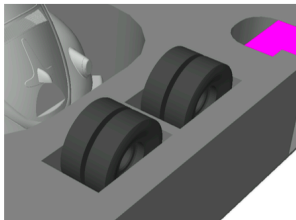
- cut tabs of axis 1 and stow it \_\_\_\_\_
- cut tabs of axis 2 and stow it \_\_\_\_\_
- cut tabs of axis 3 and stow it \_\_\_\_\_
- cut tabs of axis 4 and stow it \_\_\_\_\_



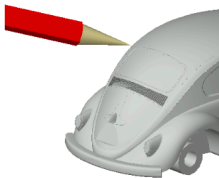
- sand head of axis 1 and stow it \_\_\_\_\_
- sand head of axis 2 and stow it \_\_\_\_\_
- sand head of axis 3 and stow it \_\_\_\_\_
- sand head of axis 4 and stow it \_\_\_\_\_



- cut tabs of wheel 1 and stow it \_\_\_\_\_
- cut tabs of wheel 2 and stow it \_\_\_\_\_
- cut tabs of wheel 3 and stow it \_\_\_\_\_
- cut tabs of wheel 4 and stow it \_\_\_\_\_



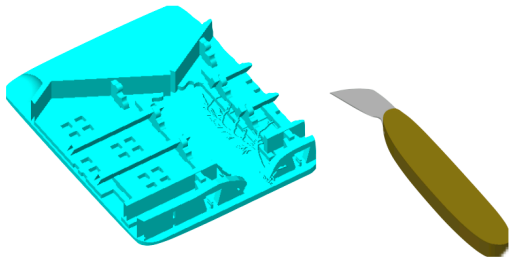
- mark then scrape a spot on the body \_\_\_\_\_
- mark then scrape a spot on the body \_\_\_\_\_
- mark then scrape a spot on the body \_\_\_\_\_
- mark then scrape a spot on the body \_\_\_\_\_
- mark then scrape a spot on the body \_\_\_\_\_
- mark then scrape a spot on the body \_\_\_\_\_
- mark then scrape a spot on the body \_\_\_\_\_



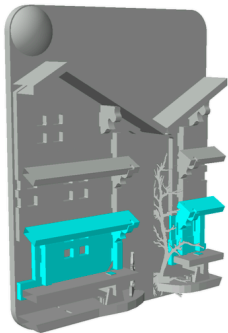
- assemble wheel 1 \_\_\_\_\_
- assemble wheel 2 \_\_\_\_\_
- assemble wheel 3 \_\_\_\_\_
- assemble wheel 4 \_\_\_\_\_



remove the granary and the knife



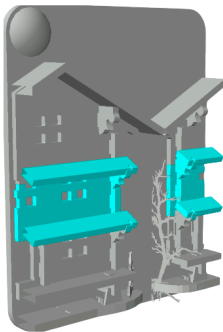
if you experienced a brief **emotional moment**  
like joy or awe,



carve a small cut in the area of the raised ground  
floor

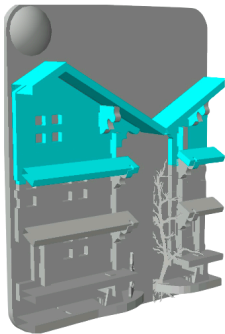


if you experienced a brief **rational moment** like reflecting on growing trees,



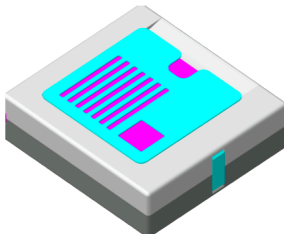
carve a small cut in the area of the first floor

if you experienced a brief emotional moment  
which might not have happened without a prior  
rational moment,



carve a small cut in the area of the second floor

stow everything and close the box



yours  
reto nardini  
kastelsstrasse 18  
2540 grenchen

[www.driftr.ch](http://www.driftr.ch) [whathow.ch](http://whathow.ch)



notes:

- its not about cars
- its not about good or bad
- reason is not better than emotion
- its about structure
- this structure is not better than other ones
- structure can help to find orientation
- orientation can be reassuring, can help decide
- this wooden box is nothing more than a **materialistic tool**, like a rock, a mobile phone, the concept of mathematics

